



# MAFA KITCHEN TOWEL EXCHANGE 2019

# Table of Contents

## Two and Three Shafts

Jennifer Fournier .....	1
Alice Garbarino .....	2
Brittany Price .....	3
Christine Wilkinson .....	4
Tina Mickley .....	5

## Four Shafts

Lois Benson .....	6
Patricia Bitting .....	7
Sandra Borgardt .....	8
Heidi Brown.....	9
Phyllis Buoniello .....	10
Marla Campbell.....	11
Pat Capogrossi.....	13
Patty Chrisman.....	14
Angela Collison .....	15
Nancy D'Angelo .....	16
Lucy Demitrack .....	17
Barbara Diefenderfer .....	18
Elisa Eiger.....	19
Lorraine Felker .....	20
Bridget Flynn .....	22
Candace Funston.....	23
Linda George .....	24
Debbie Hadfield .....	25
Deborah Herrin .....	26
Rosemary Hubbard.....	27
Sandy Huber .....	28
Cyndi Jara-Almonte.....	29

Pat Jeski .....	30
Denise Kash .....	31
Judy Klehm .....	32
Dee Lande .....	33
Laurie Layden.....	35
Christa Lemons.....	36
Carole Leroux .....	37
Meg Lundsager.....	38
Paige McAfee .....	39
Kim McManus .....	40
Elizabeth (Lisa) Mielke.....	41
Louise Miles .....	42
Deanna Moore .....	43
Janice Mosley .....	44
Sherry Necker .....	45
Beth Palmer .....	46
Nan Salomon .....	47
Jenny Sethman.....	48
Cindy Solomon.....	49
Barbara Stam.....	50
Susan Szczotka .....	51

### **Five to Seven Shafts**

Chris Asmann.....	52
Aileen Campbell.....	53
Joanna Crosby.....	54
Sharon Korte .....	55
Elyse Rogers.....	56
Elizabeth Watt .....	57

## **Eight Shafts**

Ann Guralnick .....	59
Bethany Garner.....	60
Cuyler Augustino.....	61
Nanette Baumgardner .....	62
Becky Dahlman .....	63
Patricia Doroski .....	64
Nora Eason.....	65
Cindy French .....	66
Alison Ginn .....	67
Karel Henneberger.....	68
Kathleen Kalmar .....	69
Louise Lawrence .....	70
Deborah Lawson .....	71
Carolyn Moore.....	72
Sandra Petty .....	73
Mary Pflueger .....	74
Melanie Polutta .....	75
Judy Rhoades.....	76
Gail Ross.....	77
Ruth Thoem .....	78
Ellen Turner .....	79
M. Lynn Yu .....	80

## **More than Eight Shafts**

Marjie Thompson.....	81
Nancy Everham.....	82



**Jennifer Fournier**  
**MAFA Associate Member**

**Structure:** Plain Weave

**Source:** Liz Gipson workshop,  
"Weaving a Perfect Towel"

**Warp:** Sportweight knitting cotton

**Weft:** Sportweight knitting cotton

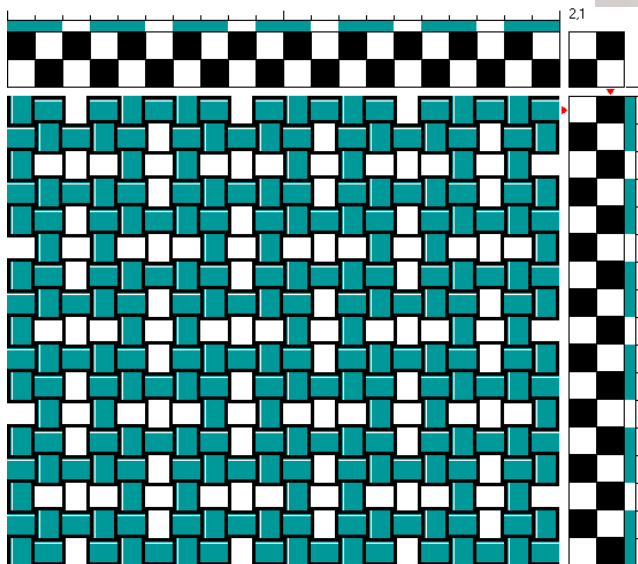
**EPI:** 12

**# Ends:** Don't know

**# Shafts:** 2 (rigid heddle)

**Weaver's notes:** This was done at a somewhat loose sett in the workshop as an experiment. I really liked the soft hand. The workshop towel was too narrow for this exchange so I made another. I hope you like it.

Color and weave pattern was 2-1 dark-light in both the warp and the weft.



# South Jersey Guild of Spinners & Handweavers

**Structure:** 3/1 Lace

**Source:** Jane Patrick's *The Weaver's Idea Book - Creative Cloth on A Rigid Heddle Loom*

**Warp:** Worsted-weight knitting cotton

**Weft:** Worsted-weight knitting cotton

**EPI: 11**

**# Ends: 164**

**# Shafts:** 2 (rigid heddle)

**Weaver's notes:** The colors and pattern I used were based on a towel that I saw at Red Stone Glenn last year. I have used this pattern many times both in towels and also scarves. It is easy to follow and looks way more complicated than it really is. I love the versatility of the rigid heddle loom as I also did a plain weave towel on the same warp without the pick-up stick. The only difficulty I had was trying to translate the rigid heddle structure to the drawdown documents suggested. I hope this all makes sense to anyone wanting to weave this same pattern.



Rigid Heddle

4 Shaft Weaving Drawdown: Weaver's name:  
Alice Garbarino

Pick up STICK IS  
3/1 LACE  
(Page 89 in The Weavers Idea Book - Jane Patrick)

Color  
White = 1  
Black = 2  
Grey = 3

UP CARDS

2X  
5X  
6X  
3X



# Brittany Price

## Handweavers of Bucks County, Philadelphia Guild of Handweavers

**Structure:** Plain Weave

**Source:** *Rigid Heddle: A Year of Towels*,  
cottonclouds.com, 'Diamond Lace' by Jodi Ybarra  
(variation)

**Warp:** 8/2 doubled cotton

**Weft:** 8/2 doubled cotton

**EPI:** 20

**# Ends:** 480

**# Shafts:** 2 (rigid heddle)

**Weaver's notes:** Pattern was a plain weave towel  
with pick up stick details. I used organic colorgrown  
cotton. Light green/dark green. The colors will show  
the more it is washed and used.



**Christine Wilkinson**  
**Philadelphia Guild of Handweavers,**  
**South Jersey Guild of Spinners & Handweavers**

**Structure:** Bumberet

**Source:** Original design

**Warp:** 3/2 cotton

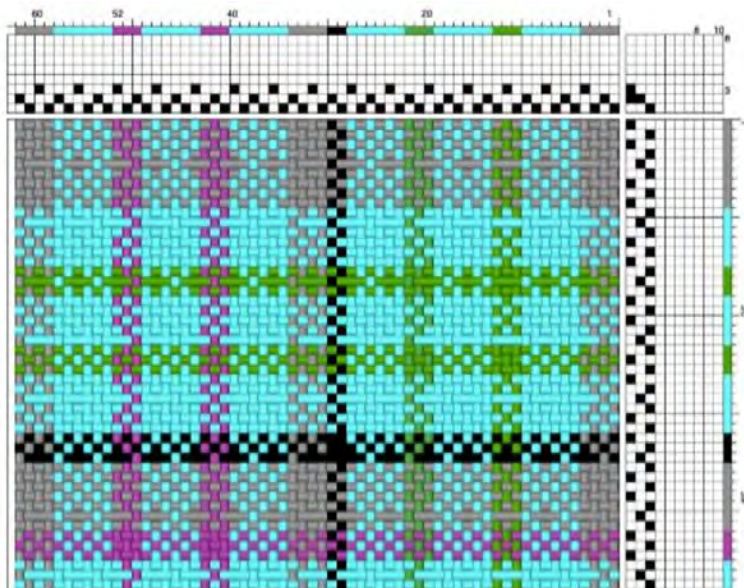
**Weft:** 3/2; 10/2 for hem cotton

**EPI:** 10

**# Ends:** 228

**# Shafts:** 3 (woven on rigid heddle loom using 1 pick up stick for third shaft)

**Weaver's notes:** I was exploring textures available on a rigid heddle loom and tried to develop a threading and treading to get a Bumberet texture. This turned out to be almost impossible because Bumberet depends on sequences of 3s. Only some of the



Treading: This towel was woven on a rigid heddle loom using 1 pick up stick.

Pick up stick: 1 Up, 1 Down across width

Weaving sequence:

Down  
Up + P.U.  
Down  
Up  
Down  
Up

color stripes show the typical Bumberet design. However, I'm pleased with the texture which will be absorbent.

Threading a rigid heddle loom using the peg method is challenging if there are odd numbers of threads in the warp. I would recommend trying this on a 4-shaft loom, but the rigid heddle gave a different yet interesting effect.

*[Editor's Note: We're missing a photo of Christine's towel. If you were the lucky recipient and can take a photo for us, please let us know!]*



**Tina Mickley**  
**Central Pennsylvania Guild of Handweavers, Lancaster Spinners &  
Weavers**

**Structure:** Plain Weave, All-Over-Spot

**Source:** *Forgotten Pennsylvania Textiles of the 18th and 19th Centuries*

**Warp:** 16/2 linen

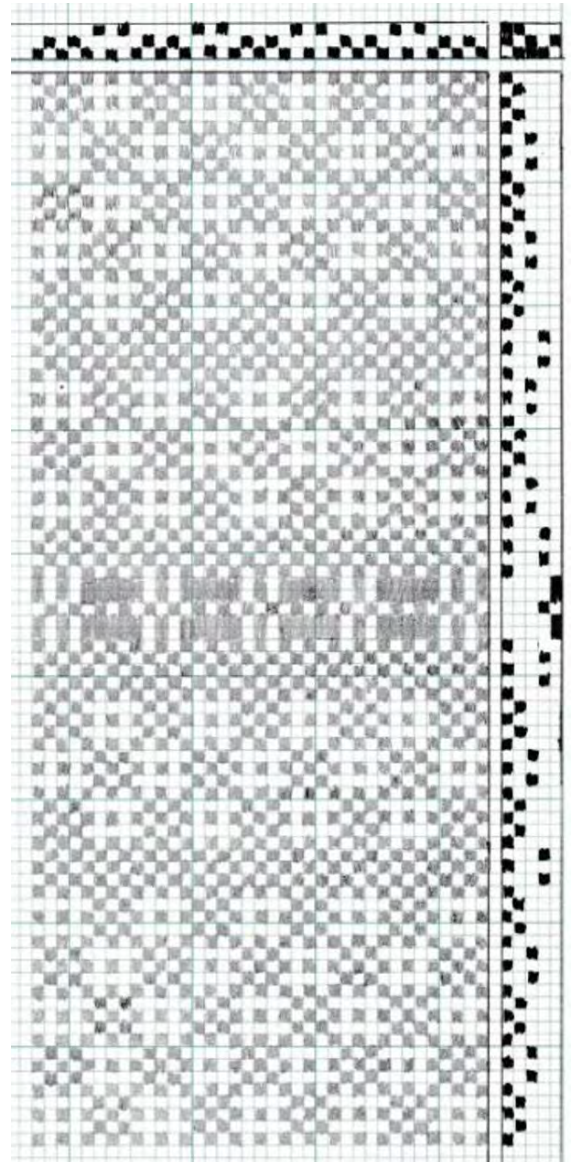
**Weft:** 16/2 linen

**EPI:** 30

**# Ends:** 569

**# Shafts:** 3

**Weaver's notes:** Woven on 3 shafts on a 4-shaft loom.





# Lois Benson

## Potomac Fiber Arts Guild, Waterford Weavers

**Structure:** Plain Weave, Twill

**Source:** Original design

**Warp:** 8/2 cotton, cottolin

**Weft:** 8/2 cotton, cottolin

**EPI:** 16

**# Ends:** 336

**# Shafts:** 4

**Weaver's notes:** This draft is a standard basic twill with plain weave borders at each end. The twill combined with color sequence for the warp was devised by Beth Wilson. I have woven a number of towels using this draft, changing the color sequencing in the warp. This gives a family of towels...all related, but each a bit different.



# Patricia Bitting

## MAFA Associate Member

**Structure:** Huck Variation

**Source:** *Handwoven's Design Collection 18*, "Friendship Towels in Huckaback" by Betsy Blumenthal and Jane Patrick

**Warp:** 8/2 cotton

**Weft:** 22/2 cottolin

**EPI:** 20

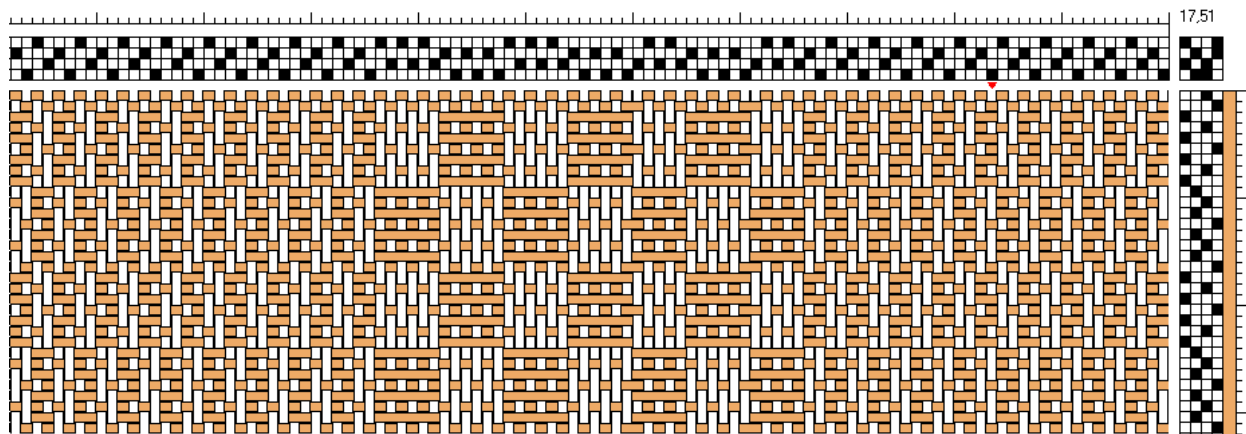
**# Ends:** 426

**# Shafts:** 4

**Weaver's notes:** I followed the pattern as published, except for these changes:

1. I used 22/2 Cottolin for the weft instead of 8/2 Cotton

2. In order to comply with the Towel Exchange rules, I removed the outer 32 threads on each side of the towel, a reduction of 64 ends. Instead of 490 ends, my towel has 426 ends.





## Sandra Borgardt Weavers Guild of Rochester

**Structure:** Twill

**Source:** *Eight Cottolin Towels* from Halcyon Yarn

**Warp:** 22/2 cottolin

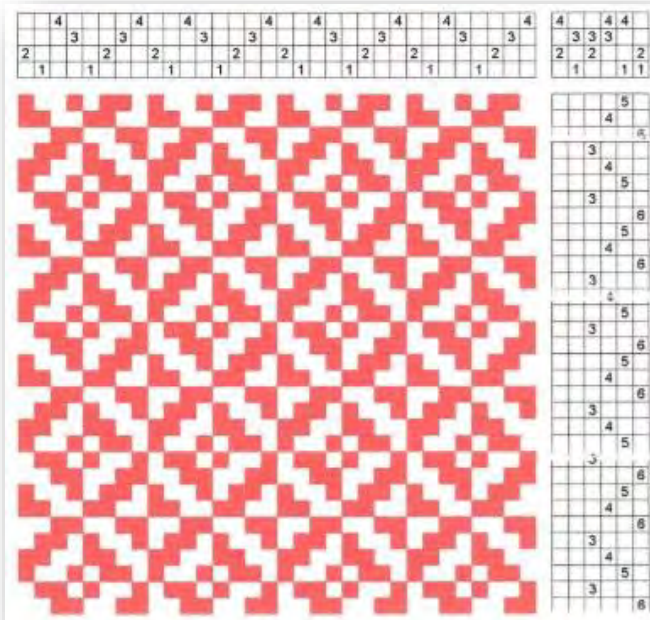
**Weft:** 22/2 cottolin

**EPI:** 20

**# Ends:** 384

**# Shafts:** 4

**Weaver's notes:** This was my first project that I started and completed all on my own after taking several weaving classes. I followed the warp color and threading order in the kit (from Halcyon Yarn), but quickly changed up the weft color order and treadling after weaving the first towel.





# Heidi Brown

## Weavers Guild of Greater Baltimore

**Structure:** Twill

**Source:** Dixon, *Handweaver's Pattern Directory*, p. 210 – Advancing 2/2 Twill

**Warp:** 5/2 cotton (mercerized)

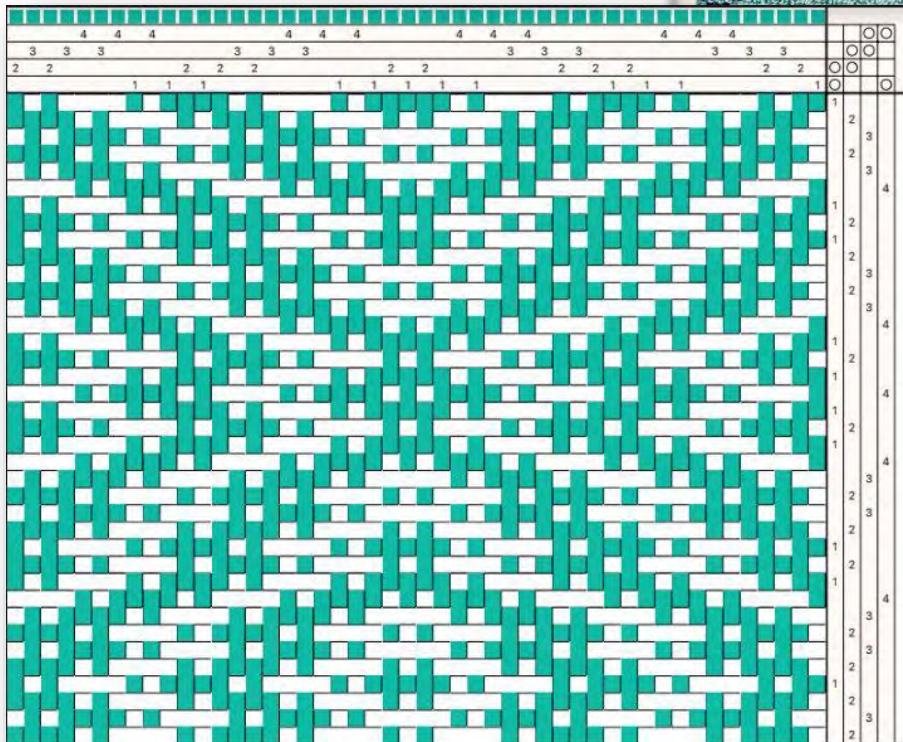
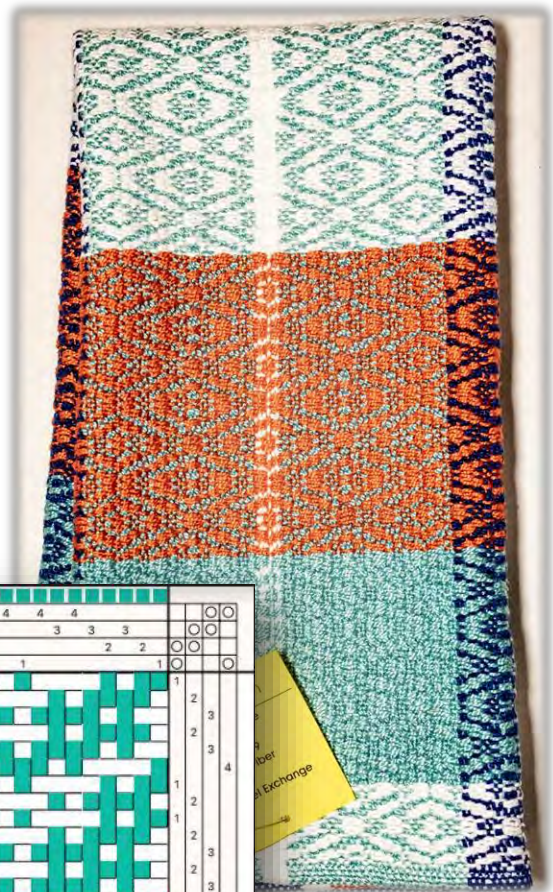
**Weft:** 5/2 cotton (mercerized)

**EPI:** 18

**# Ends:** 384

**# Shafts:** 4

**Weaver's notes:** Use plainweave for hem in finer cotton so hem doesn't splay.





# Phyllis Buoniello

## Paumanok Weavers Guild

**Structure:** Turned Taquete

**Source:** *Handwoven* Sept/Oct 2015,  
"Mission-Style Dish Towels" by Sharon  
Campbell, pp. 28-30

**Warp:** 8/2 cotton (unmercerized)

**Weft:** 8/2 cotton (unmercerized)

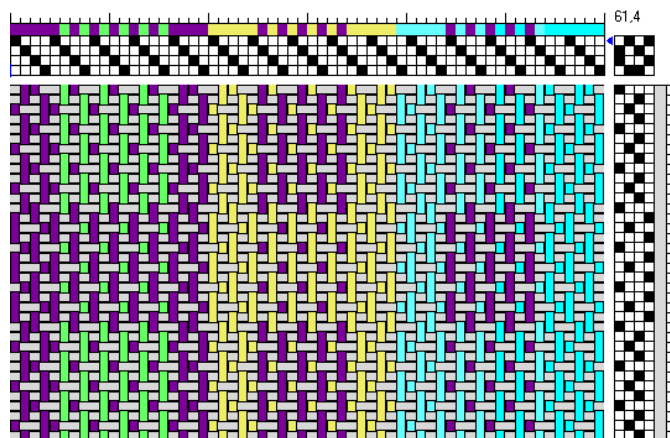
**EPI:** 20

**# Ends:** 380

**# Shafts:** 4

**Weaver's notes:** This towel is the result of a  
guild project. We all used the same pattern  
with different colors.

Good way to use up small amounts of yarn.



*Generic Turned Taquete Draft*

# Marla Campbell

# Central Virginia Fiberarts Guild

### Structure: Mock Damask

**Source:** Original design, inspired by *Handwoven* May/June 1994, "White Rabbit Tea Towels"

**Warp:** 10/2 cotton

**Weft:** 10/2 cotton

EPI: 24

**# Ends:** 460 plus 2 float ends

**# Shafts: 4**

**Weaver's notes:** Detailed instructions for doing the mock damask are in the 1994 May/June *Handwoven* magazine. Take your time on pick-up work. Wrong threads can occasionally get caught resulting in very long floats and it's difficult un-weaving pick-up work. The instruction doesn't indicate it, but you should leave your pick-up stick in between the second and third pick-up indicated on the draft. I found a long cable knitting needle worked really well for the pick-up work. After the pick-up work, the towels weave really fast.



115x

Legend:

- = Float
- W = Main Color
- C = Contrasting Color
- P = Pick-up Shed

Diagram details:

- weft-face mock satin:** A 4x4 grid where the main color (W) is on the weft and the contrasting color (C) is on the warp. The pattern is a simple 2x2 checkerboard.
- warp-face mock satin:** A 4x4 grid where the main color (W) is on the warp and the contrasting color (C) is on the weft. The pattern is a simple 2x2 checkerboard.
- mock damask pick-up:** A 4x4 grid where the main color (W) is on the weft and the contrasting color (C) is on the warp. The pattern is a more complex damask-like design with pick-up sheds (P) indicated.
- texture weave for body of towel:** A 4x4 grid where the main color (W) is on the weft and the contrasting color (C) is on the warp. The pattern is a simple 2x2 checkerboard.



For this design there are 115 derits with 4 threads in each dent for 460 ends plus 2 float threads on the edge - total ends = 462. The first pick up starts in dent #96 if working from the right or dent #22 if working from the left. Pattern is worked from bottom to top.

[illegible]



**Pat Capogrossi**  
**Chesapeake Weavers Guild, Weavers Guild of Greater Baltimore**

**Structure:** Turned Taquete

**Source:** *Handwoven* Sept/Oct 2015, "Mission Style Dish Towels in Turned Taquete," by Sharon Campbell

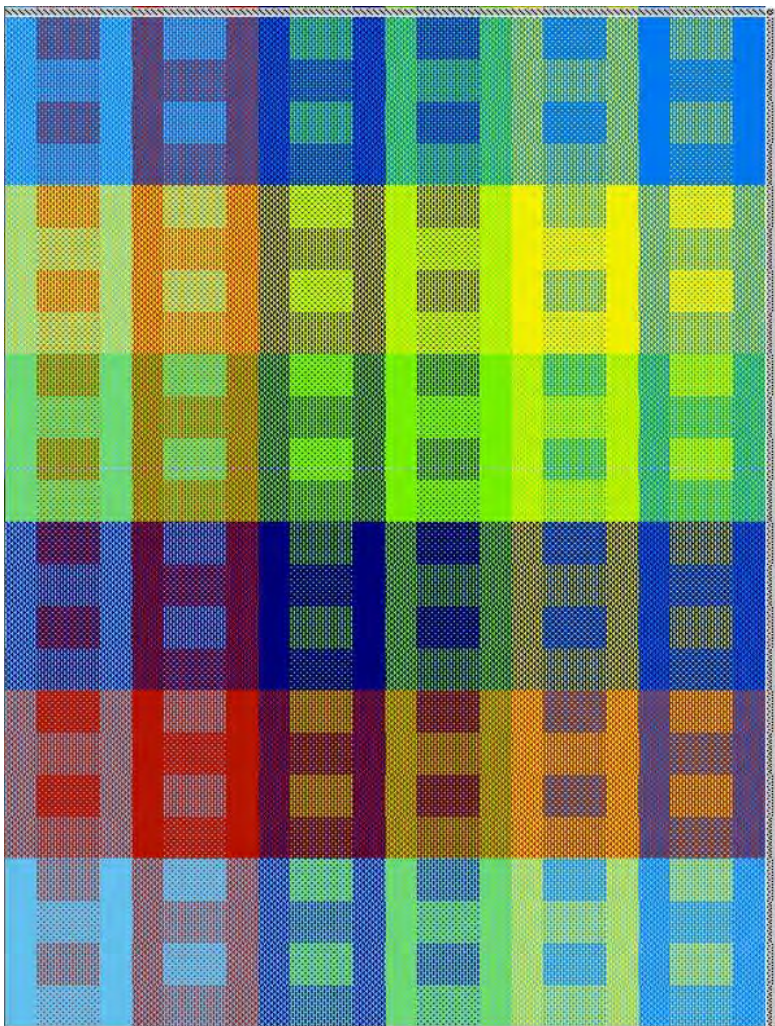
**Warp:** 8/2

**Weft:** 8/2 cottolin

**EPI:** 24

**# Ends:** 480

**# Shafts:** 4



**Weaver's notes:** Picked 3 pairs of coordinating colors and used twice in warp by reversing color order within each pair of blocks. Wove off by rotating through all six colors of warp and also varying sizes of blocks to make each towel in the warp unique.

# Patty Chrisman

## Frances Irwin Handweavers

**Structure:** Twill (Birds Eye)

**Source:** Heinrich Woolhever (1821), *Pattern Book Drafts*

**Warp:** 10/2 cotton

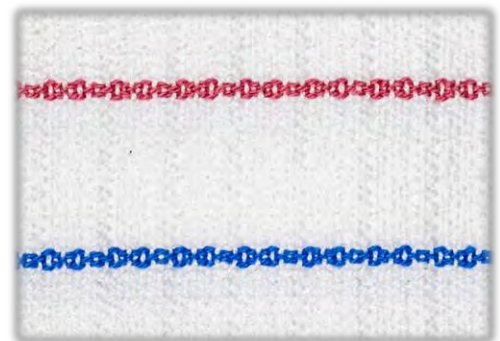
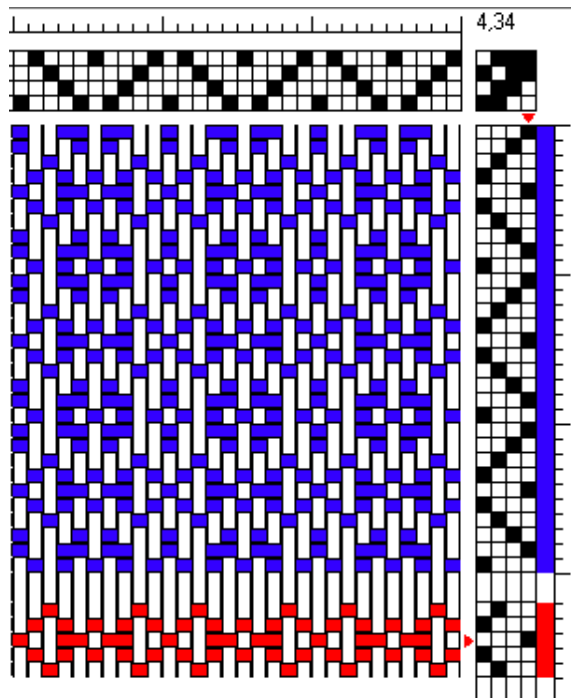
**Weft:** 8/2 cotton

**EPI:** 20

**# Ends:** 382

**# Shafts:** 4

**Weaver's notes:** This towel is threaded and treadled based on a draft in Heinrich Woolhever's 1821 *Pattern Book Drafts*. It represents further use of a pattern I chose to explore for the Early Weaving Books and Manuscripts Group of Complex Weavers. The cheerful stripes are my addition.





## Angela Collison

### Weavers Guild of Greater Baltimore

**Structure:** Plain Weave, Overshot

**Source:** *Weaving Designs by Bertha Gray Hayes: Miniature Overshot Patterns* by Norma Smayda, Gretchen White, Jody Brown and Katharine Schelleng, pp. 30, 97

**Warp:** 8/2 textured cotton

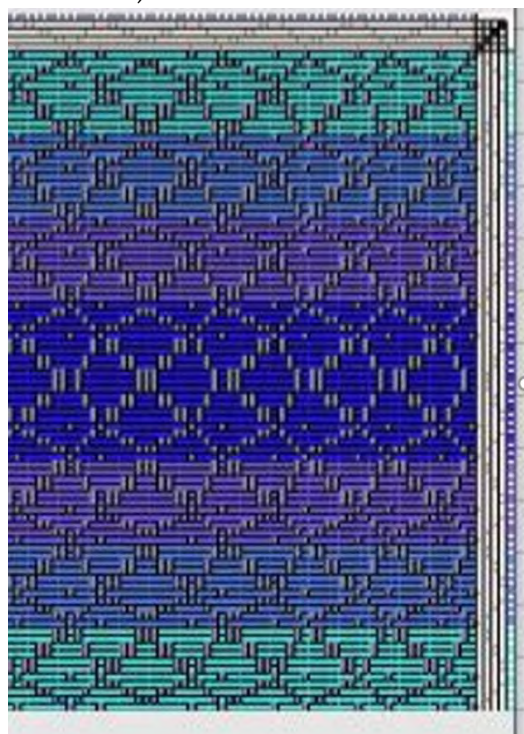
**Weft:** 8/4 cotton

**EPI:** 24

**# Ends:** 433, plus 2 floating selvages

**# Shafts:** 4

**Weaver's notes:** Page 31 of the BGH book shows a skeleton drawdown of Wishing Well for a bookmark that is significantly different from the Wishing Well draft on page 97 (the book suggests it may be due to a treadling variation).



Using the skeleton drawdown, I determined the threading/treadling that would provide this effect.

The threading was not drafted as overshot, preferring instead to have groups of 2 or 3 consecutive ends threaded on the same shaft for textural interest. The majority of the towel is woven as plain weave, with one or more bands of the pattern woven as for overshot (pattern picks alternate with plain weave picks).

# Nancy D'Angelo

## Paumanok Weavers Guild

**Structure:** Overshot

**Source:** Davison, *A Handweaver's Pattern Book*,  
p. 136, VII, modified

**Warp:** 8/2 cotton (unmercerized)

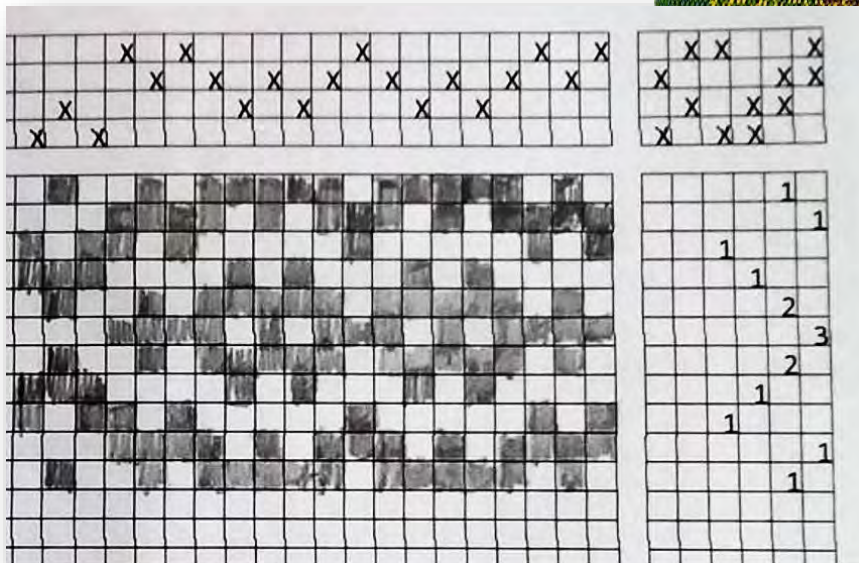
**Weft:** 8/2 and 5/2 cotton (unmercerized)

**EPI:** 24

**# Ends:** 406

**# Shafts:** 4

**Weaver's notes:** Use tabby. I used a jack loom,  
so I reversed the tie-up shown in the book.





# Lucy Demitrack

## Harmony Weavers Guild, Jockey Hollow Weavers

**Structure:** A variant of John Murphy's Birdseye #1

**Source:** Davison, *A Handweaver's Pattern Book*

**Warp:** 8/2 unmercerized cotton, multicolor

**Weft:** 8/2 cotton, Dark Green

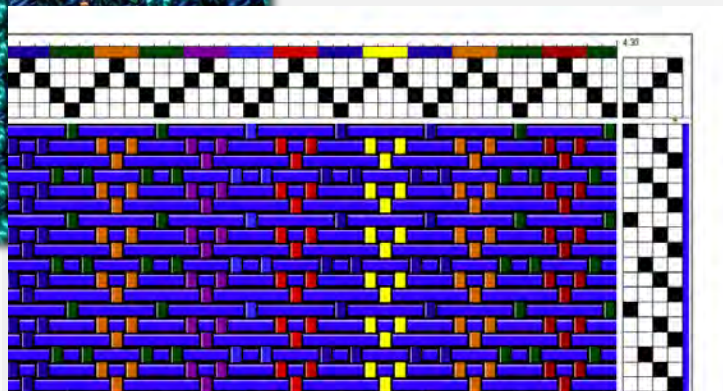
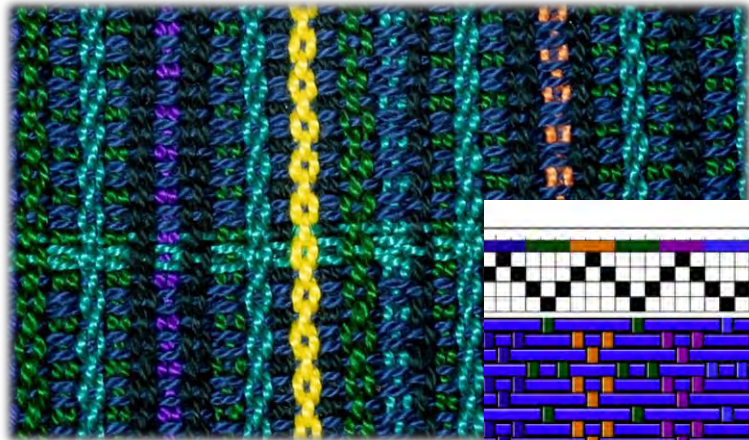
**EPI:** 21

**# Ends:** 378

**# Shafts:** 4

### Weaver's notes:

The yarn was predominantly unmercerized cotton. The goal was to use yarns from dark to light so that the light warps would stand out. The colors were chosen as I wound the warp. Occasionally perle cotton was used if the color sequence required it and I ran out of other options.



# Barbara Diefenderfer

## Central Pennsylvania Guild of Handweavers, Weaver's Roundtable

**Structure:** Twill

**Source:** Traditional design

**Warp:** 8/2 cotton

**Weft:** 8/2 cotton

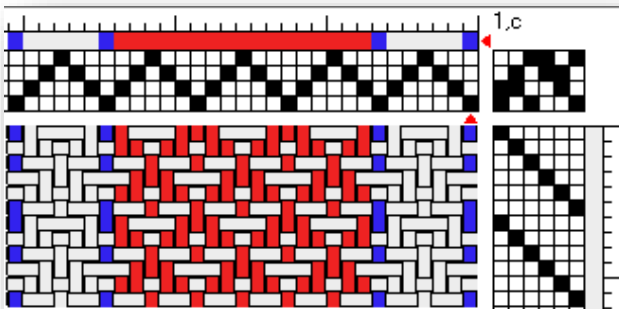
**EPI:** 24

**# Ends:** 410

**# Shafts:** 4

**Weaver's notes:** A 4-shaft point twill sounds boring but when you add warp stripes of tan, red, green and bright yellow separated by white stripes edged by a single navy thread there is hope. Add an interesting tie-up and treadling to create an interesting texture you have a towel of beauty. Towels like this make dish drying something you look forward to doing.

I have arranged the treadling on 6 treadles for ease. Only 4 treadles are necessary.





## Elisa Eiger

### Jockey Hollow Weavers Guild

**Structure:** Plain Weave, Monk's Belt

**Source:** Dixon (2007), *The Handweaver's Pattern Dictionary*, p. 101

**Warp:** 10/2 cotton

**Weft:** 10/2 cotton; used doubled for pattern weft

**EPI:** 24

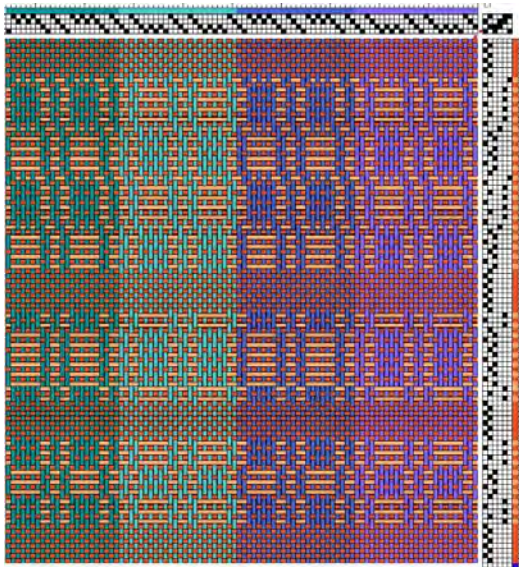
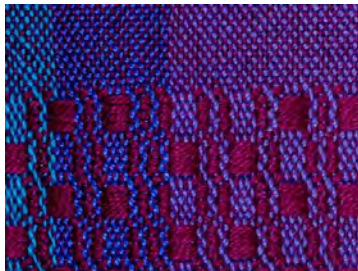
**# Ends:** 384

**# Shafts:** 4

#### Weaver's notes:

Tip: Use a temple.

Note that the draft shows only four stripes of the 16 I used in the towel. I basically flopped the draft several times. This resulted in two wide green stripes on the sides and one wide purple stripe in the center. Stripe order is: blue-violet, blue, blue-green, green; G, BG, B, BV; BV, B, BG, G; G, BG, B, V.



This was created in response to Jockey Hollow Weavers' swatch exchange. We played "Weavers Poker," in which each participant was dealt five cards for Weave Structure; Color; Color Relationship; Fiber; and Other, and was challenged to create swatches showing at least 4 of 5. My hand was: monk's belt; orange; analogous, chenille, and iridescence. My swatches had orange weft, with the monk's belt pattern in light-orange chenille. For my towels, however, I'm using fuchsia 10/2 for the weft. (It's still iridescent.)

The draft shows three possibilities for the monk's belt accent; only the first is used in the towels. These monk's belt patterns are from Dixon (2007), *The Handweaver's Pattern Dictionary*, p. 101. In monk's belt, tabby A and B (dark orange) alternate between the pattern picks (light orange).

**Lorraine Felker**  
**WIAC Fiber Guild**

## Structure: Overshot

**Source:** Traditional design

**Warp:** 18/3 linen

**Weft:** 18/3 linen, 8/2 cotton

**EPI: 20**

**# Ends: 421**

**# Shafts: 4**

Lees Surrender Towel Project.tif				
Project Date: Feb 15, 2013				
Wash: 2 by: Balance 100%				
Initial:	4	Warp in one repeat:	421	
Twist:	8	Wedge in one repeat:	806	
SUTT:	20 overpasses	PP:	20 pickovers	
wrap waste:	38 inches			
shrinkage:	10 %			
loom width:	17.41 inches	finished width:	13.07 inches	
loom length:	1.80 yards	finished length:	1.80 yards	

Yarn		wrap	wet	total
CCFFFF Line 1	110	0		
	219 yds	0 yds		219 yds
CCFFCC Line 2	182	0		
	344 yds	0 yds		344 yds
CCOCCO Line 3	123	0		
	222 yds	0 yds		222 yds
Natural Now sat 20	0	801		
	0 yds	387 yds		387 yds

work count	+21
------------	-----

pick over 801

Total warp yards 725  
Total weft yards 2487

Total weft yards: 387

Heddle Count for looms with 17.41 inches and set 20

Shift	Heddlers	Left half only	Right half only
1:	122	61	61
2:	80	40	40
3:	89	45	44
4:	130	65	65

Total beddles needed: 421

Warp Thread count for one repeat of threading

36	22	22	38
91		91	
		(27)	



### Tie-up

4			4	4			4
		3	3			3	3
	2	2			2	2	
1	1			1	1		

### Threading

The image displays a page of musical notation for a guitar exercise, consisting of six numbered phrases. Each phrase is written on a six-line staff and spans six measures. The notation includes various rhythmic values (quarter, eighth, and sixteenth notes) and rests, with some measures containing a '4' indicating a four-measure rest. The page is divided into sections by a vertical line, and the exercises are numbered 1 through 6.

Phrase 1: Measures 1-6. Notes: 2, 2, 2, 2, 2, 2. Rhythms: 1, 1, 1, 1, 1, 1. A '4' is written above the first measure.

Phrase 2: Measures 1-6. Notes: 2, 2, 2, 2, 2, 2. Rhythms: 1, 1, 1, 1, 1, 1. A '4' is written above the first measure.

Phrase 3: Measures 1-6. Notes: 2, 2, 2, 2, 2, 2. Rhythms: 1, 1, 1, 1, 1, 1. A '4' is written above the first measure.

Phrase 4: Measures 1-6. Notes: 2, 2, 2, 2, 2, 2. Rhythms: 1, 1, 1, 1, 1, 1. A '4' is written above the first measure.

Phrase 5: Measures 1-6. Notes: 2, 2, 2, 2, 2, 2. Rhythms: 1, 1, 1, 1, 1, 1. A '4' is written above the first measure.

Phrase 6: Measures 1-6. Notes: 2, 2, 2, 2, 2, 2. Rhythms: 1, 1, 1, 1, 1, 1. A '4' is written above the first measure.





## Treadlin

start [1]						
1						
1						
1						
1						
		3				
		3				
			4			
			4			
1						
1						
			4			
			4			
1						
1						
			4			
			4			
			4			
		3				
		3				
		2				
1			4			
		3				
		2				
		2				
1						
1						
1						
1						
			4			
			4			
			4			
		3				
		3				
		3				
		2				
		2				
1						
1						
1						
			4			
		3				
		2				
1						
1						
		2				
		3				
1			4			
1						
		2				
		2				
		3				
		3				
		3				
			4			
			4			
			4			
1						

[illegible]

cont. [141]					
	1	2 2 2			
	1				
	1				
	1				
	1				
			4		
		3 3	4		
			4		
	1 1		4		
			4		
	1		4		
	1		4 4 4		
		3 3			
	2				
1			4		
		3			
	2 2				
	1				
	1		4 4		
			4		
		3 3 3			
	2 2 2				
1					
1					
1					
1			4		
			4 4		
		3 3			
		3			
	2 2				
1					
1					
			4		
		3			
	2				
	1				
		2			
		3			
1			4		
		2			
		3			
			4		
1					
1					
		2 2			
		3 3			

[illegible]

## Bridget Flynn Philadelphia Guild of Handweavers

**Structure:** Twill

**Source:** Unknown

**Warp:** 8/2 cotton

**Weft:** 8/2 cotton

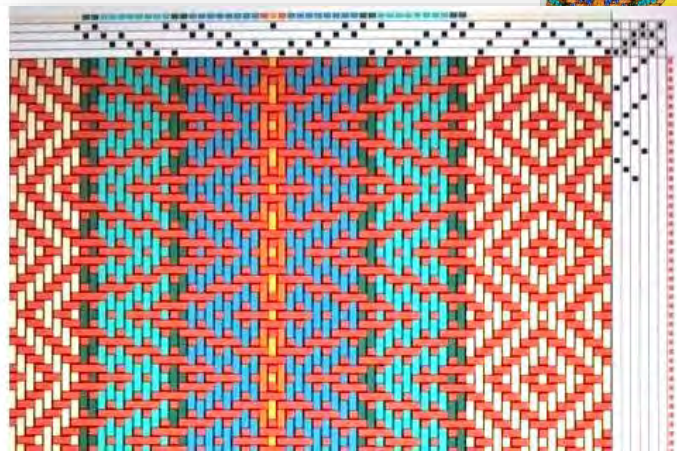
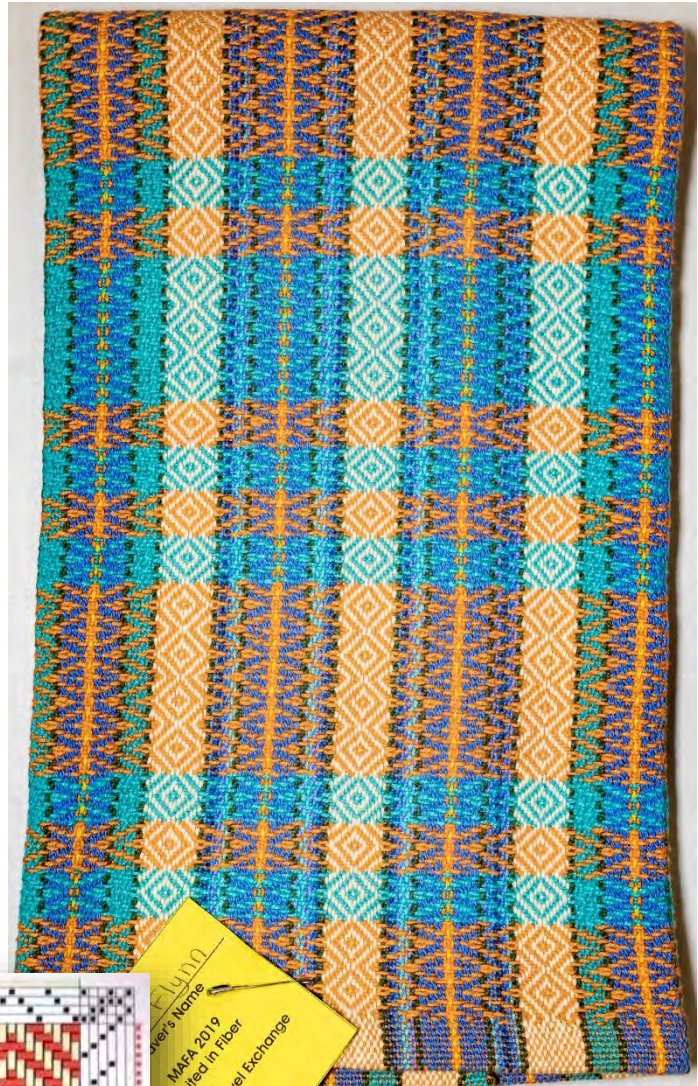
**EPI:** 24

**# Ends:** 495 plus 2 for selvedge

**# Shafts:** 4

**Weaver's notes:** I recorded this draft in iWeavIt quite a while ago as Simplified Damask from Marguerite Davison's *A Handweavers Pattern Book*. However, this is not that draft so I now have no idea where the pattern came from.

I repeated the pattern 8 times and added 28 ends at the left-hand side and 12 ends on the right-hand side to balance out the pattern.





# Candace Funston

## South Jersey Guild of Spinners & Handweavers

**Structure:** Plain Weave, Huck variation

**Source:** *A Handwoven Treasury*, 1989, "Keep It Simple Towel" by Mary Ann Geers

**Warp:** Aunt Lydia's Classic 10 crochet thread  
(cotton)

**Weft:** same as warp

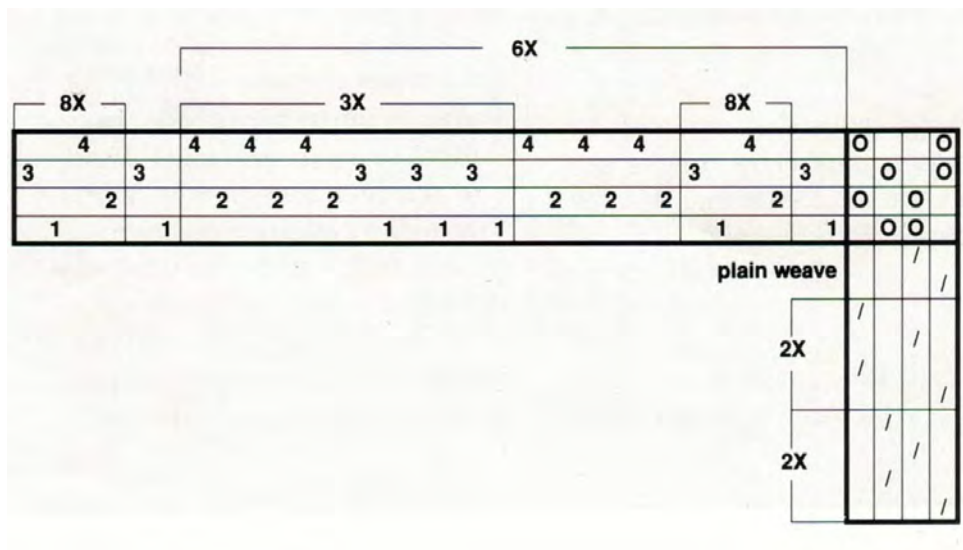
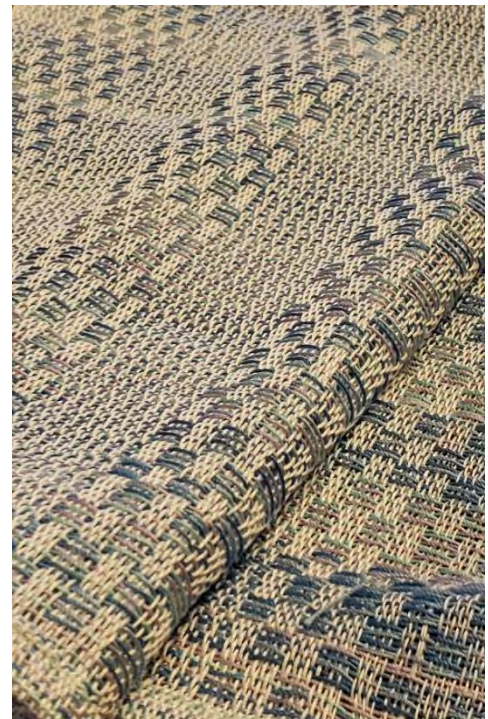
**EPI:** 20

**# Ends:** ~490

**# Shafts:** 4

**Weaver's notes:** I am a beginner weaver and this is my first project. The cotton thread I used tangled easily and I struggled with setting the warp. And then making sure it was not twisted or mis-threaded. There are a few (many) mistakes.

The threading is huck-a-back blocks from Marguerite Davison's *A Handweaver's Pattern Book*.



**Linda George**  
**Fredericksburg Spinners and Weavers Guild**

**Structure:** Twill

**Source:** Traditional design

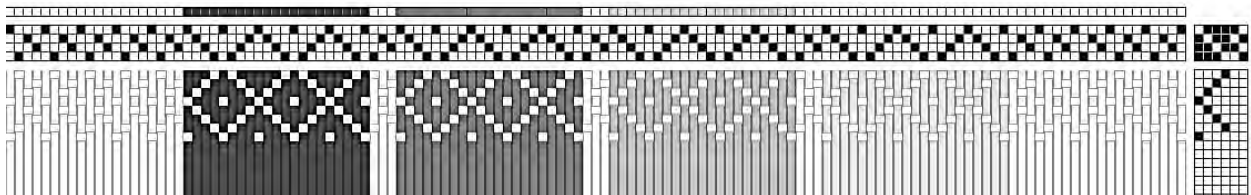
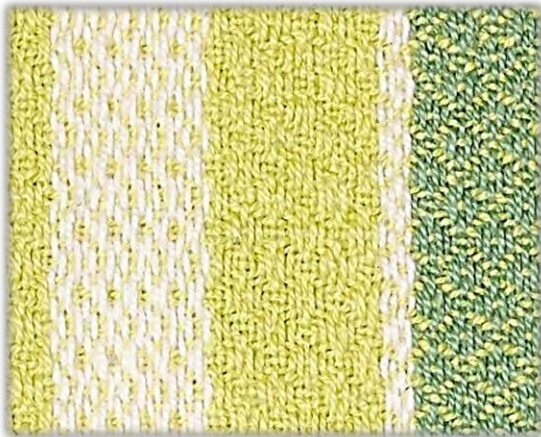
**Warp:** 8/2 cotton

**Weft:** 8/2 cotton, cottolin

**EPI:** 20

**# Ends:** 480

**# Shafts:** 4





## Debbie Hadfield

### Three Rivers Fiber Focus

**Structure:** M's and O's

**Source:** Published draft from  
Interweave Press

**Warp:** 8/2 cotton (unmercerized)

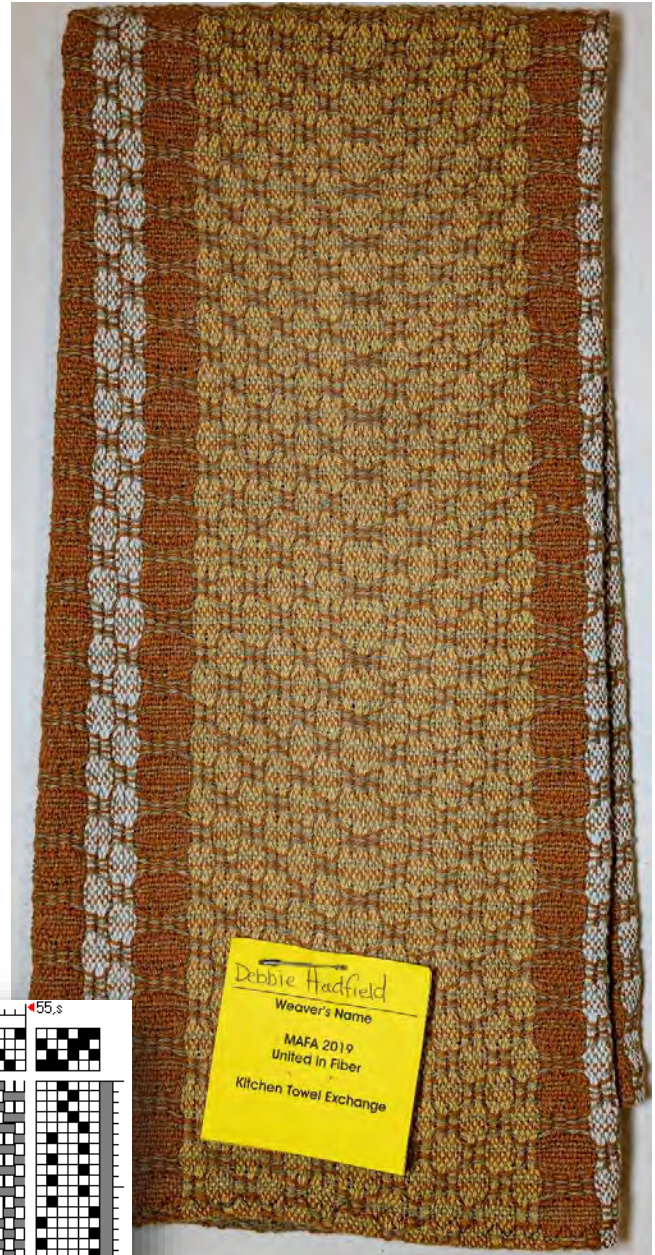
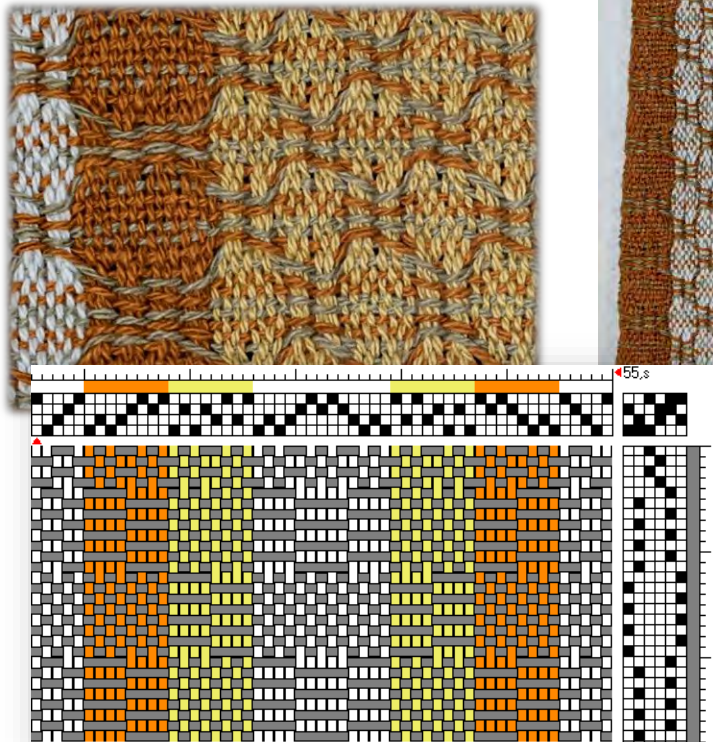
**Weft:** 8/2 cotton (unmercerized)

**EPI:** 20

**# Ends:** 489

**# Shafts:** 4

**Weaver's notes:** This is my first  
weaving project using the M's and O's  
weaving structure.



# Deborah Herrin

## Potomac Fiber Arts Guild, Weavers Guild of Greater Baltimore

**Structure:** Atwater-Bronson lace

**Source:** Halcyon Yarn 2007/Michael Patterson

**Warp:** 16/2 linen (Newport)

**Weft:** 16/2 linen (Newport)

**EPI: 20**

**# Ends: 386**

### # Shafts: 4

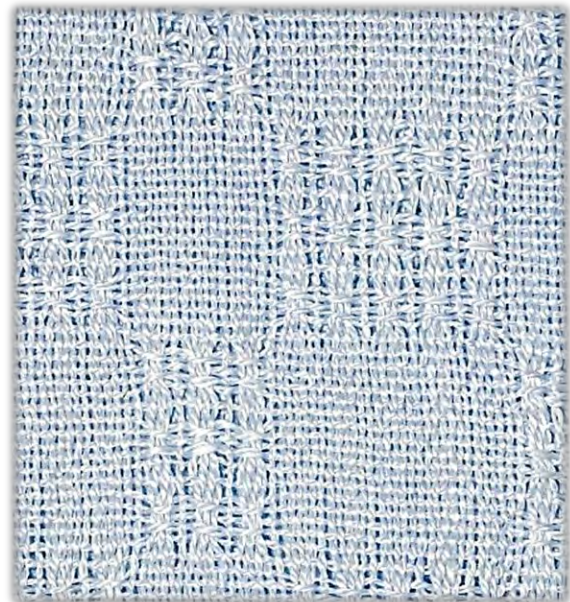


Threading:

[illegible]

	Template
	Plain Weave
	Weaves
	Block A
	Weaves
	Block B

Tabby	Blk A	Blk B	
3/4"			For hem
	3x		Repeat these to desired length of towel
		3x	
3/4"			For hem





# Rosemary Hubbard

## Weavers Guild of Greater Baltimore

**Structure:** Monk's Belt

**Source:** *Handwoven's Design Collection #18:  
A Treasury of Towels*

**Warp:** 8/2 cotton, cottolin

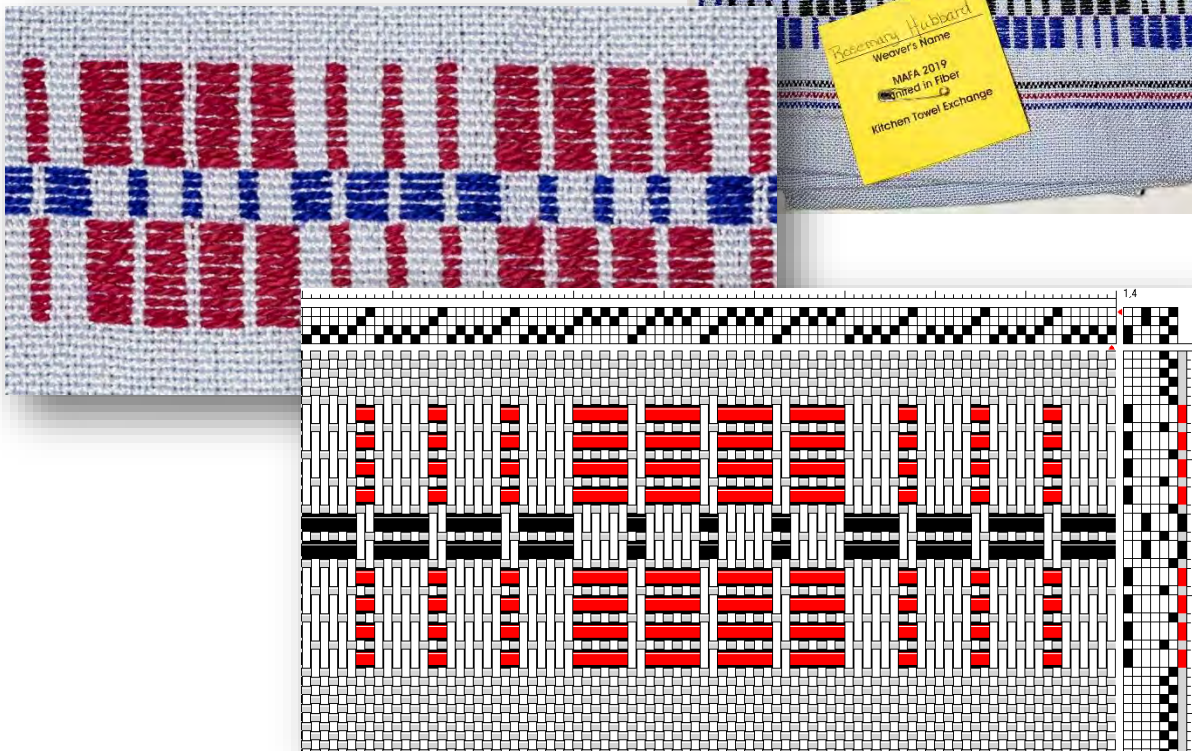
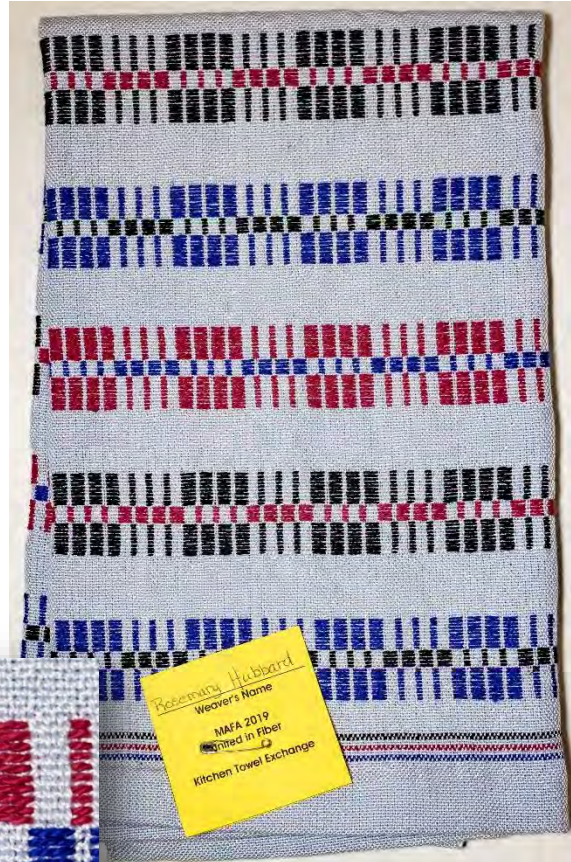
**Weft:** 10/2 cotton

**EPI:** 27

**# Ends:** 640

**# Shafts:** 4

**Weaver's notes:** It was fun to play with color. It was difficult to keep the Monk's Belt pattern areas from drawing in.



# Sandy Huber

## Frances Irwin Handweavers

**Structure:** Huck Lace

**Source:** Rosalie Neilson's Workshop, "Color and Design in Huck Lace Towels"

**Warp:** 8/2 cotton (unmercerized)

**Weft:** 8/2 cotton

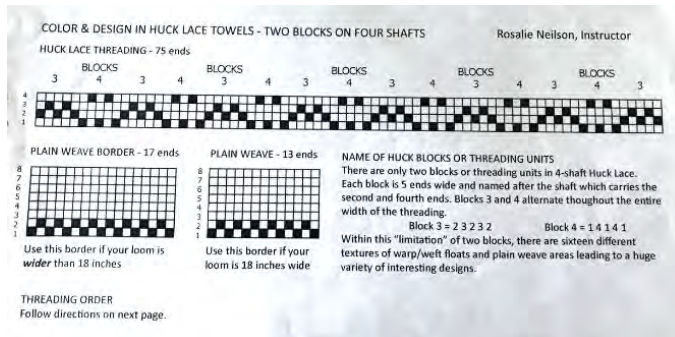
**EPI:** 18

**# Ends:** 75

**# Shafts:** 4

**Weaver's notes:** I learned how to choose 2 block textures for a 4 shaft loom. This was woven on a warp from MAFA 2017 Rosalie Neilson's class "Color and Design in Huck Lace Towels"

I enjoyed weaving Huck for the first time, and enjoyed learning about motif, design, & texture in the class.



<p>total warp ends are 293</p> <p>Threading:</p> <p>Color A (Polo Tan) Plain weave border 17 ends</p> <p>Color B (Dark Navy) Huck section 75 ends</p> <p>Color A (Polo Tan) Plain weave stripe 17 ends</p> <p>Color C (Wine) Huck section 75 ends</p> <p>Color A (Polo Tan) Plain weave stripe 17 ends</p> <p>Color D (China Blue) Huck Section 75 ends</p> <p>Color A (Polo Tan) Plain weave border 17 ends</p>	<p>Weave:</p> <p>40 picks Plain weave header Color A</p> <p>75 picks Huck Pattern one color B,C or D</p> <p>17 picks Plain weave band color A</p> <p>75 picks Huck Pattern one color B,C or D</p> <p>17 picks Plain weave band color A</p> <p>75 picks Huck Pattern one color B,C or D</p> <p>17 picks Plain weave band color A</p> <p>75 picks Huck Pattern one color B,C or D</p> <p>17 picks Plain weave band color A</p> <p>75 picks Huck Pattern one color B,C or D</p> <p>40 picks Plain weave header Color A</p>
--	---



# Cyndi Jara-Almonte

## Central Virginia Fiberarts Guild

**Structure:** M's & O's

**Source:** *Handwoven* Jan/Feb 2016, "Linen Towels in M's and O's," by Deanna Deeds

**Warp:** 40/2 unbleached and half bleached linen,  
22/2 cottolin

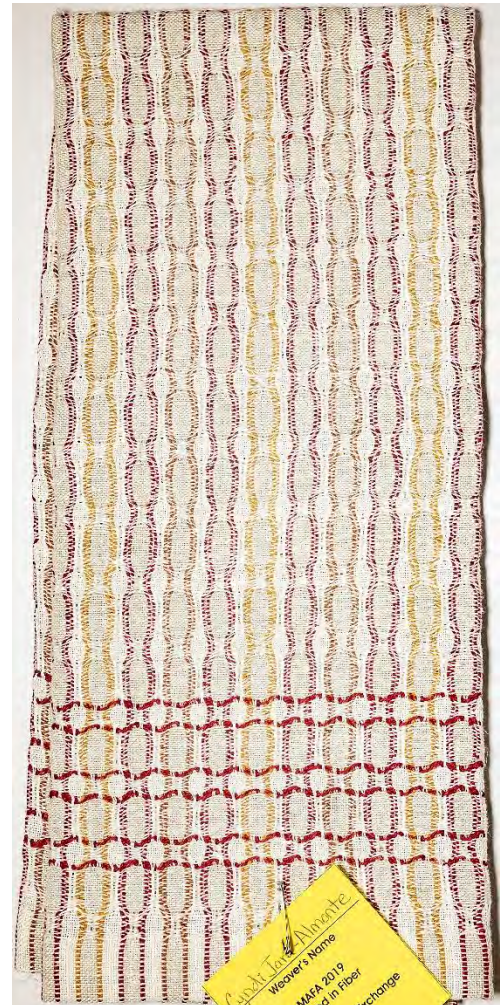
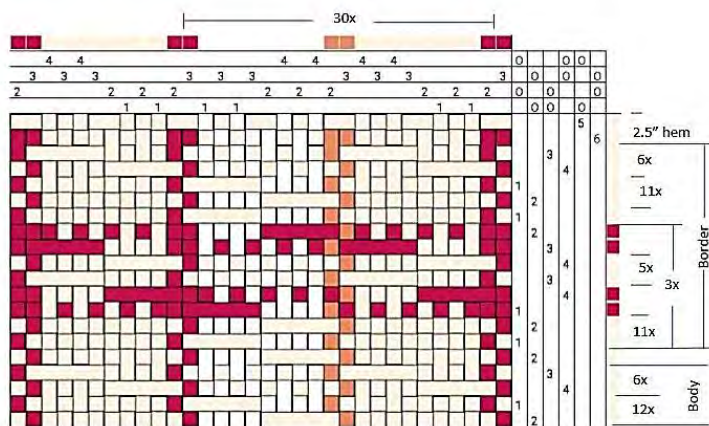
**Weft:** 20/1 half bleached linen, 22/2 cottolin  
(border)

**EPI:** 30

**# Ends:** 612

**# Shafts:** 4

Colors	Ends												Total
Red cottolin	2	2			2	2			2	2		2	64
Rust cottolin			2	2					2	2			32
Burnt orange cottolin					2	2					2	2	28
Unbleached Linen	8		8				8		8		8		248
Half Bleached Linen		8		8				8		8		8	240
												7x	612





# Pat Jeski Paumanok Weavers Guild

**Structure:** Crackle

**Source:** *Handwoven* Nov/Dec 2017, "Towels in a Modern Arrangement" by Linda Gettmann

**Warp:** 8/2 cotton

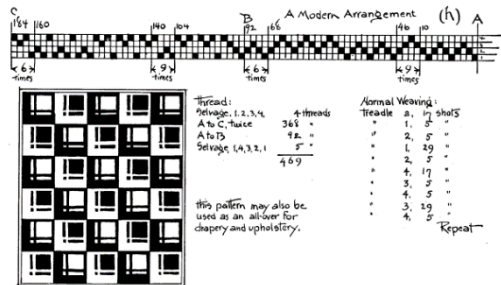
**Weft:** 8/2 cotton

**EPI:** 20

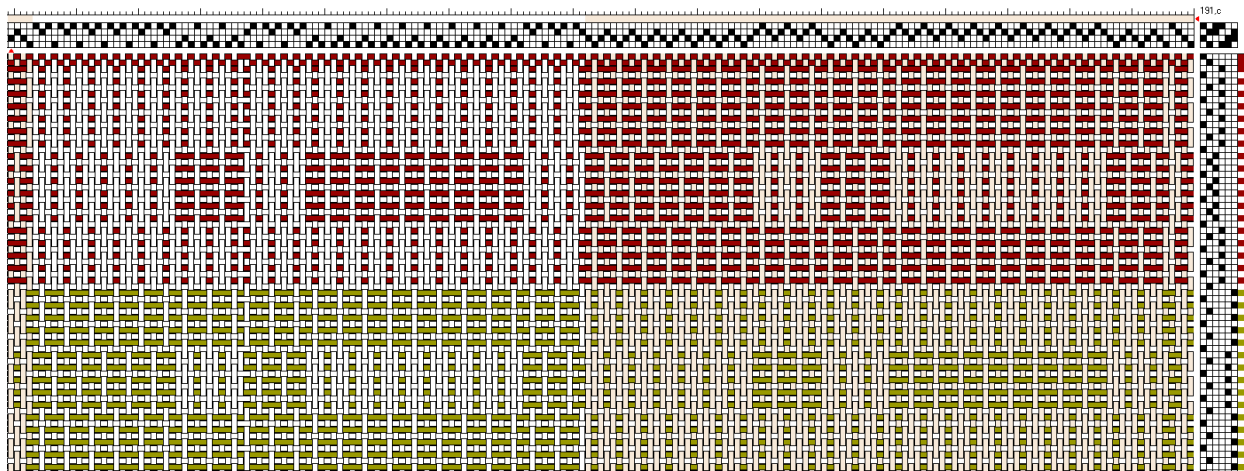
**# Ends:** 469

**# Shafts:** 4

**Weaver's Notes:** Linda Gettmann's design is based on the Mary Atwater design "A Modern Arrangement."



Either of these patterns may be made as much larger as desired, by increasing the number of repeats under each of the large blocks. It is not advised to make them smaller, as they are not effective when reduced.  
The normal method of threading is best if the figures are to be woven as illustrated, but many variations of threading are possible. Pattern (h) may also be woven in the Italian manner.





# Denise Kash

## Fredericksburg Spinners and Weavers Guild

**Structure:** Twill

**Source:**

**Warp:** 8/2 cotton

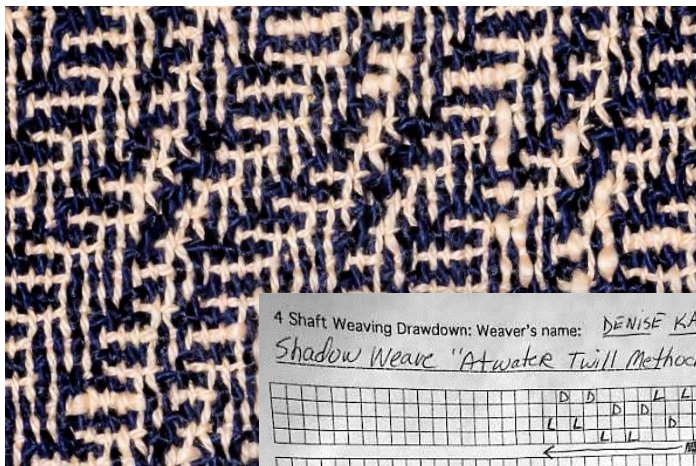
**Weft:** 8/2 cotton

**EPI:** 20

**# Ends:** 394

**# Shafts:** 4

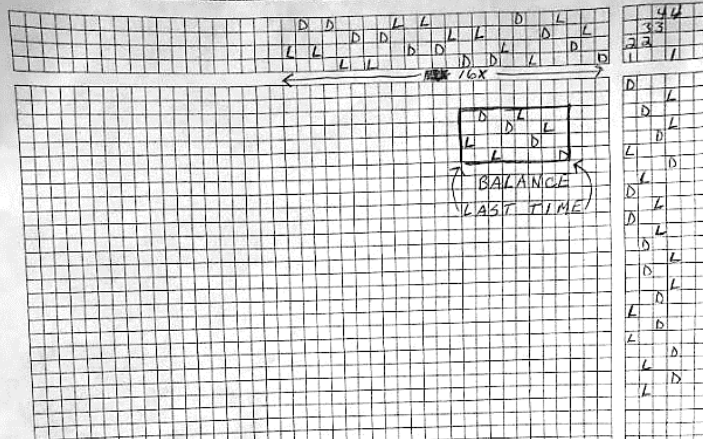
**Weaver's notes:** *Shadow Weave, Atwater*  
Twill Method. Used 1 floating selvedge on  
each side



Denise Kash  
Weaver's Name  
MAFA 2019  
United in Fiber  
Kitchen Towel Exchange

4 Shaft Weaving Drawdown: Weaver's name: DENISE KASH  
Shadow Weave "Atwater Twill Method"

L=Light color  
D=DARK color





# Judy Klehm

## Fredericksburg Spinners and Weavers

**Structure:** Plain weave

**Source:** Original Design

**Warp:** 8/2 Cotton

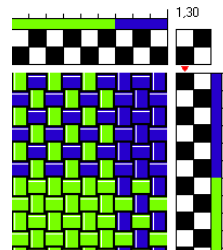
**Weft:** 8/2 Cotton

**EPI:** 20

**# Ends:** 420

**# Shafts:** 4

**Weaver's notes:** The color block design is based on Fibonacci relationships. The blue area is 8 inches wide (160 ends). The lime green area is 13 inches wide (260 ends). In the weft, there is 3 inches of lime green, then a  $\frac{3}{4}$  inch stripe of blue. The following green and blue stripes are 5 pics each. The remainder if the towel is woven with lime green. The stripes are only on one end of the towel.





## Dee Lande

### Frances Irwin Handweavers, Jockey Hollow Weavers Guild

**Structure:** M's & O's

**Source:** Inspired by *Handwoven* Nov/Dec 1989, "M's and O's Tablecloth," by Margaret Gaynes

**Warp:** 8/2 cotton (unmercerized)

**Weft:** 8/2 cotton (unmercerized)

**EPI:** 24

**# Ends:** 525

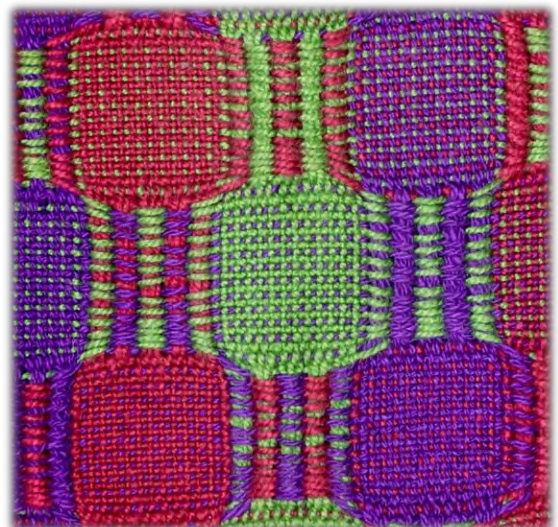
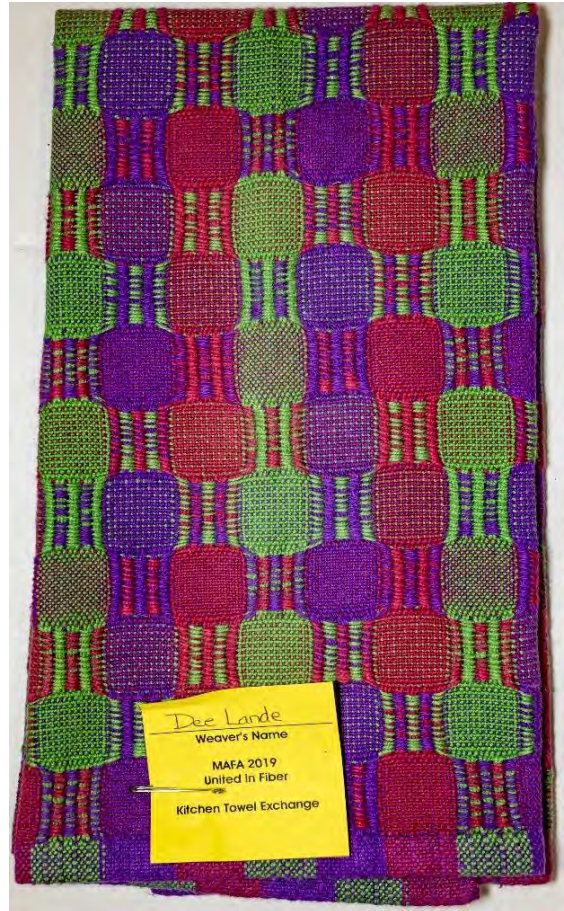
**# Shafts:** 4

**Weaver's notes:** The warp alternates 2 threading blocks with 3 thread colors. This is a two shuttle weave and each block of the 2-block treadling uses two colors in the weft, and the color combination changes with each block change. All 3 of the warp colors are used in the weft in this order: Purple & Red (purple for 1st and last pick) / Green & Purple (green used for 1st and last pick) / Red & Green (red used for 1st and last pick).

This alternating color arrangement gives a two-colored stripe block that changes with each block.

If you have more than 4 shafts, the original directions recommend using a left and right border of plain weave, threaded on shafts 5 and 6.

I really like the way this looks, but it was a bit of a pain to weave (using 2 shuttles and a color change at every block) and I will probably not use this color/weave arrangement again.

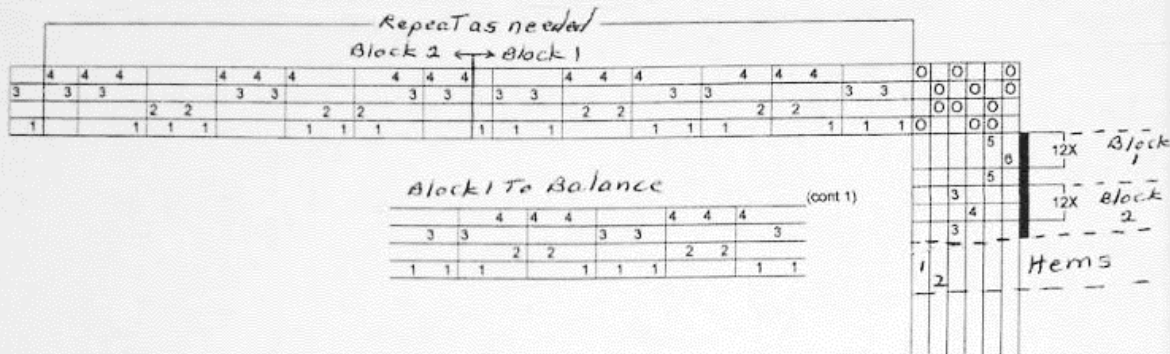


## 2019 MAFA Towel Exchange

NAME: Dee Lande  
Threading Draft:

DATE: June 3<sup>rd</sup>, 2019

Tie-Up Rising  
Sinking  
Counter March



SOURCE: HANDWOVEN, November/December 1989, pages 56 & 78 - Designed by Margaret Gaynes

What makes this M & O pattern different, is the alternating colors in both warp and weft, the odd number of ends and pics for each block, and the use of two shuttles, which create vertical color stripes with the weft floats. With two shuttles and a change of color at every block change, it is a little slow to weave, but the color effect is worth it.

### DIRECTIONS:

**GENERAL:** Floating selvages can be used with this structure for neater selvages while using 2 shuttles. True plain weave is not possible across the entire warp. Use Treadles 1 & 2 for hems.

**THREADING:** Alternate block 1 and block 2, with a final block 1 for balance. The warp uses 3 colors, changed with each block change. That is, block 1 in color A, block 2 in color B, block 1 in color C, block 2 back to color A, etc. The towel used purple, green, and red in that order, across the warp.

**TREADLING:** Each weft block is woven with two shuttles in two alternating colors, which switch at each block change. The three warp colors are used for weft and continually alternate in this order:

- Purple & Red (1<sup>st</sup> and last pics with purple)
- Green & Purple (1<sup>st</sup> and last pics with green)
- Red & Green (1<sup>st</sup> and last pics with red)

The odd numbers in both the threading and treadling blocks creates the colored vertical stripes between each plain weave block.

### TOWEL DATA:

WARP: Size/Fiber: 8/2 Unmercerized Cotton Color: Purple, Green, Red WEFT: Same as warp  
Yarn Sources: Green & Red are from Webs - Purple is from Halcyon

EPI: 24 REED: 12 Dent SLEY: 2 /dent PPI: 22  
WIDTH IN REED: 22" FINISHED WIDTH: 19.5" WOVEN LENGTH: 30" FINISHED LENGTH: 26.4"

### FINISHING DETAILS:

Machine washed in warm water with cold rinse. Machine dried with low temp setting. Ironed on cotton setting.



# Laurie Layden

## Chesapeake Weavers Guild

**Structure:** Turned Taquete

**Source:** *Handwoven* Sept/Oct 2015,  
"Mission-Style Dish Towels in Turned  
Taquete," by Sharon Campbell

**Warp:** 6/2 cotton

**Weft:** 6/2 cotton

**EPI:** 24

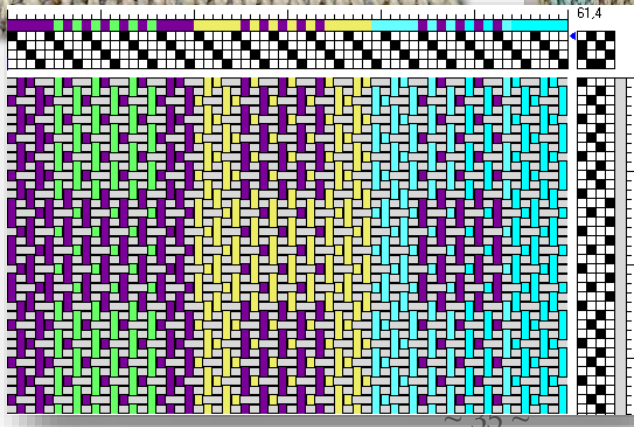
**# Ends:** 480

**# Shafts:** 4

**Weaver's notes:** I used what color yarns I  
had on hand. I wrote numbers on the warp  
order from the magazine to keep track of my  
color selection, which I wound on card,  
while winding my warp.



Laurie Layden  
Weaver's Name  
MAFA 2019  
United in Fiber  
Kitchen Towel Exchange



Generic  
Turned  
Taquete Draft



# Christa Lemons

## Weaver's Roundtable

## Structure: Twill

**Source:** *Weaver's Craft* Summer 2001, p. 8

**Warp:** 5/2 and 10/2 cotton

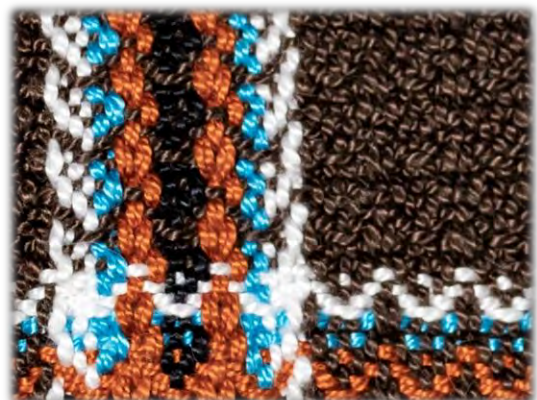
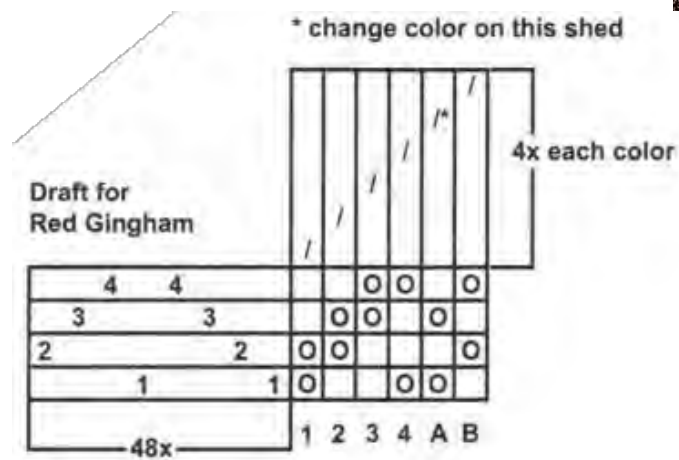
**Weft:** 5/2 and 10/2 cotton

**EPI: 18**

**# Ends: 384**

**# Shafts: 4**

**Weaver's notes:** I really enjoyed weaving this towel and the fabric that was produced. As I used a very different color way than suggested, my towel looks not a lot like the gingham checks in the published pattern. I hope whoever receives this towel enjoys it for many years.





**MAFA Associate Member**

**Structure:** Lace

**Source:** *Fermieres du Quebec* magazine, December 2002

**Warp:** 16/2 cotton

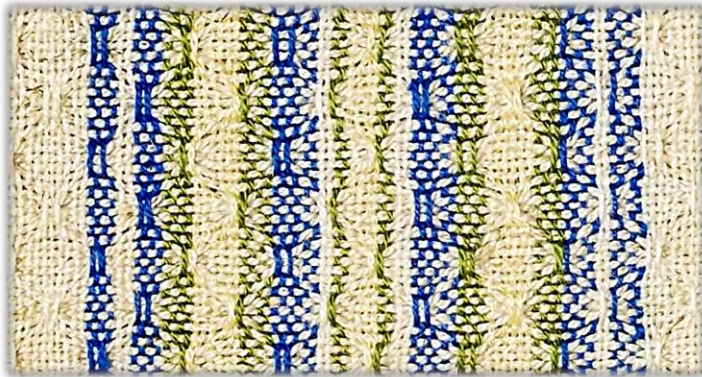
**Weft:** 16/2 cottolin

**EPI: 24**

**# Ends:** 480 ends

**# Shafts: 4**

**Weaver's notes:** I did not put the different colors of the used threads; it's up to you to use any color.



4 Shaft Weaving Drawdown: Weaver's name:

Carole LEROUX

X41

[illegible][illegible]

Tabby      desired length      Tabby

~ 37 ~



## Meg Lundsager Waterford Weavers

**Structure:** Twill

**Source:** *Weavers*, Issue 31, pp. 16-17

**Warp:** 8/2 cottolin

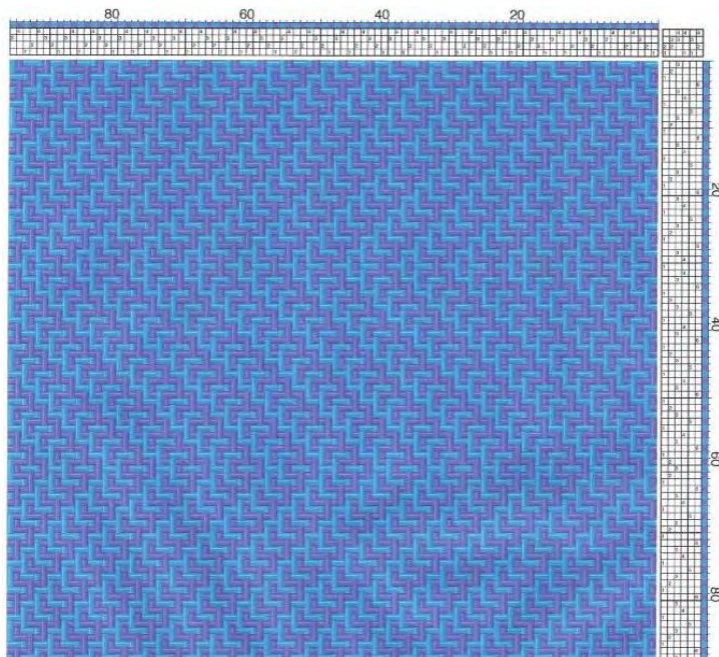
**Weft:** 8/2 cottolin

**EPI:** 24

**# Ends:** 402

**# Shafts:** 4

**Weaver's notes:** I was looking for some ideas to help me mix colors and found this draft in a *Weavers* magazine. I ended up making 4 towels and used the various suggested treadling options to create alternate patterns and a sampler towel for future reference. Weaving this towel taught me how to reverse a treadling order in a way that made sense. It took a bit of experimentation to find the right transition point.



~ 38 ~





# Paige McAfee

## Philadelphia Guild of Handweavers

**Structure:** Plain Weave, Twill

**Source:** Gist Yarn, "Coastal Linen Tea Towels" by Christine Jablonski

**Warp:** 18/3 linen

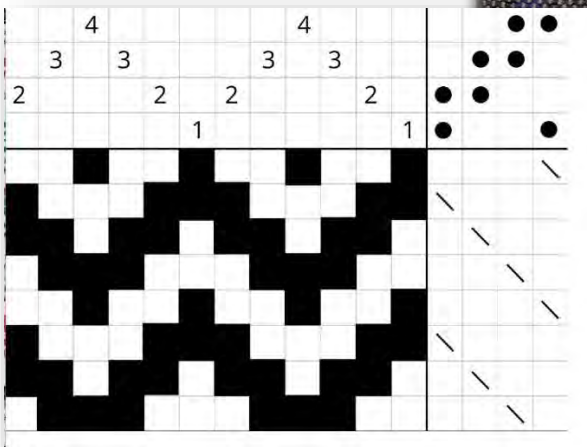
**Weft:** 18/3 linen

**EPI:** 20

**# Ends:** 280

**# Shafts:** 4

**Weaver's notes:** I simply played with random striping in both the warp and weft. While the pattern is technically from Gist Yarn, the point draft is from page 71 of Ann Dixon's *The Handweaver's Pattern Directory*.



**Kim McManus**  
**Triangle Weavers, Inc.**

**Structure:** Plain Weave, Twill

**Source:** Original design/ traditional design

**Warp:** 8/2 cotton

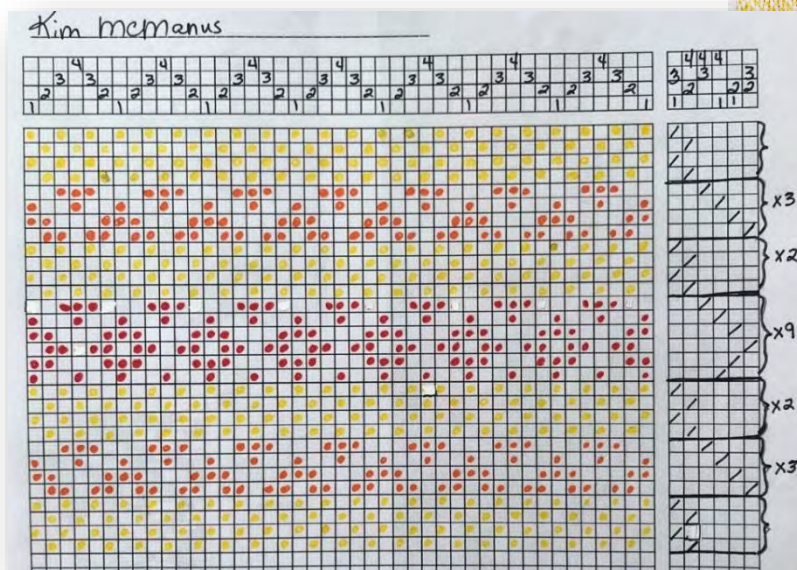
**Weft:** 8/2 cotton

**EPI:** 16

**# Ends:** 290

**# Shafts:** 4

**Weaver's notes:** I did notice that my warp drew in more for the point twill than the plain weave. Next time I will use a temple for that part. Warp color is white. Weft colors — plain weave is pale yellow, point twill chevron is orange and point twill diamond pattern is red. The hem was hand-sewn prior to washing.





**Elizabeth (Lisa) Mielke**  
**Chesapeake Weavers Guild**

**Structure:** Turned Taquete  
**Source:** *Handwoven* Sept/Oct  
2015, "Mission-Style Dish  
Towels in Turned Taquete,"  
by Sharon Campbell

**Warp:** 8/2 cotton

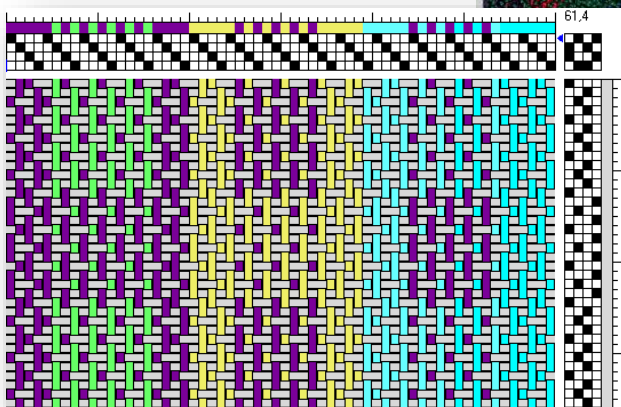
**Weft:** 8/2 cotton

**EPI:** 20

**# Ends:** 380

**# Shafts:** 4

**Weaver's notes:** I somehow  
reversed the blocks on both  
edges of the towel, but I like  
the way it turned out.



*Generic Turned Taquete Draft*

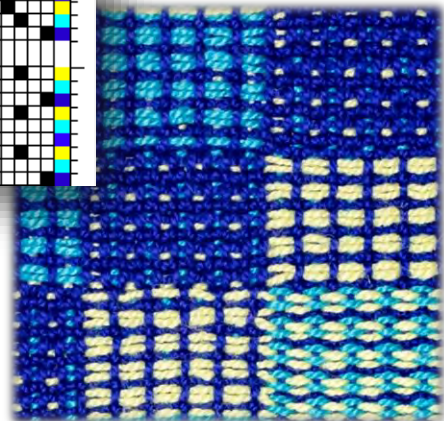
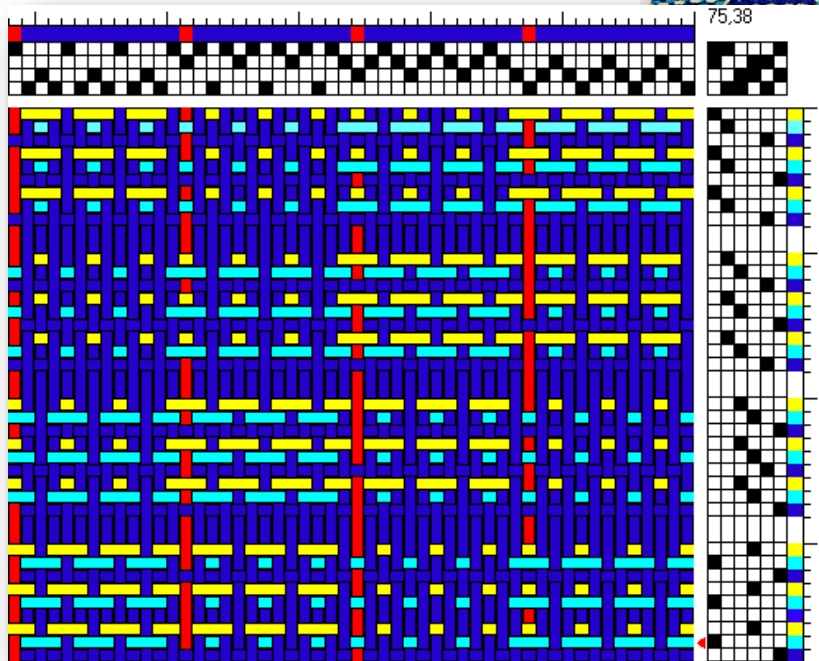
## Louise Miles Chesapeake Weavers

**Structure:** Crackle

**Source:** Susan Wilson's workshop; *Weave Classic Crackle & More* by Susan Wilson

**Weaver's Notes:** Polychrome crackle treadling has two contrasting pattern picks (yellow and turquoise) followed by alternating tabby picks (blue).

The draft below shows three repeats each of the four crackle blocks. Red indicates an incidental thread that connects blocks in the threading. Spaces separate the treadlings for the four blocks so that it's easier to see where the sequence begins and ends.





# Deanna Moore

## Pioneer Valley Weavers

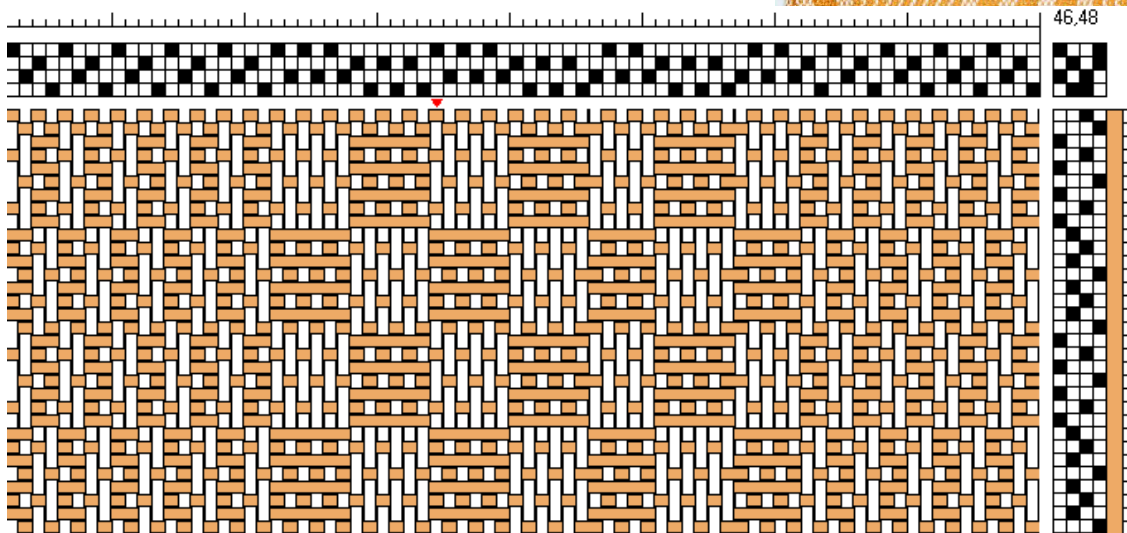
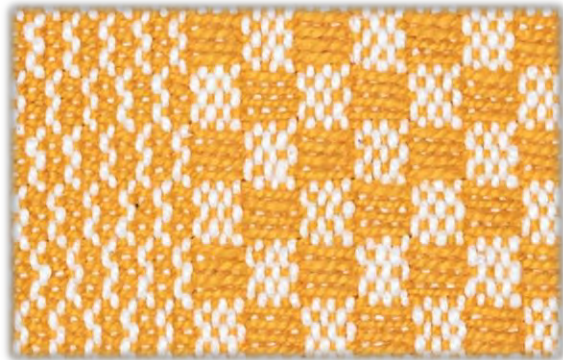
**Structure:** Huck

**Source:** *Handwoven's Design Collection 18*, p. 4,  
"Friendship Towels in Huckaback" by Betsy  
Blumenthal and Jane Patrick

**# Shafts:** 4

**Warp:** cotton

**Weft:** cotton



**Janice Mosley**  
**Handweavers Guild of the New River Valley**

**Structure:** M's and O's

**Source:** *Weaver's Craft*

**Warp:** 5/2 cotton

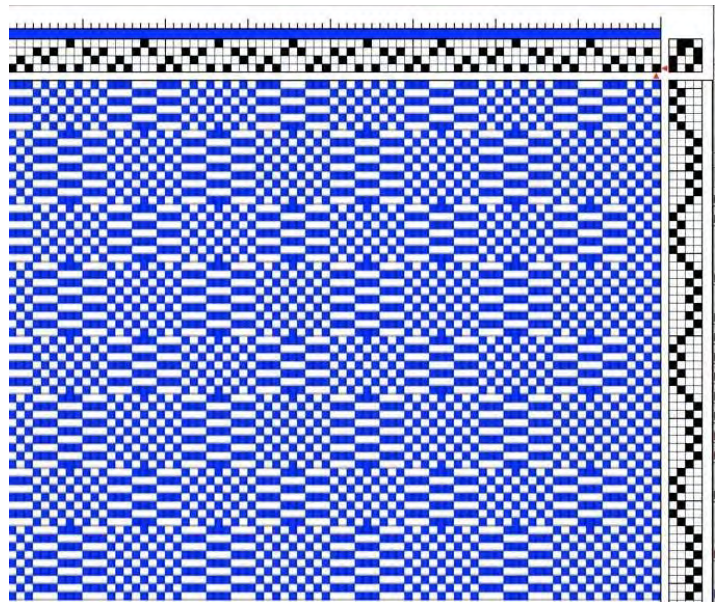
**Weft:** 5/2 cotton

**EPI:** 15

**# Ends:** 233

**# Shafts:** 4

**Weaver's notes:** The texture was more subtle because of the variegated weft color.





# Sherry Necker

## Warped Weavers of Harford County

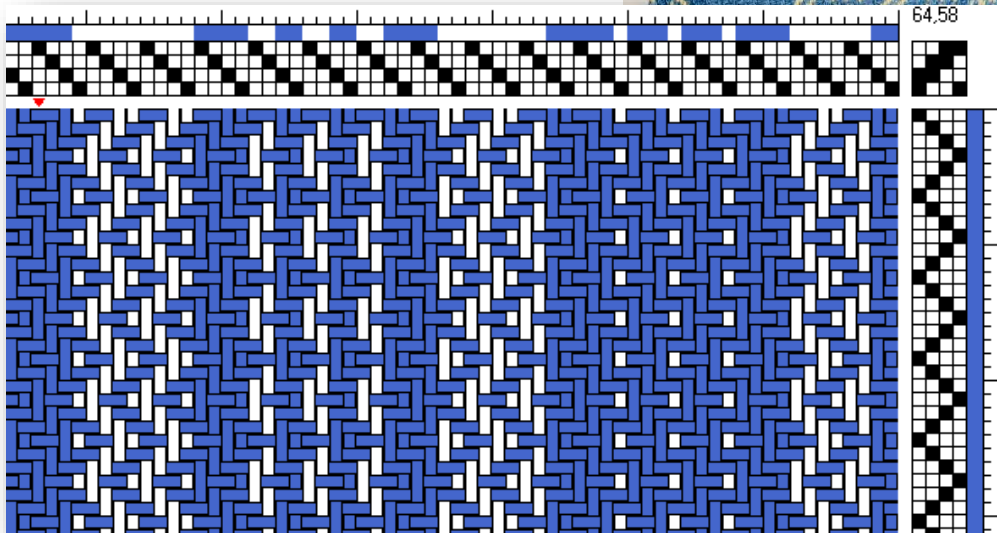
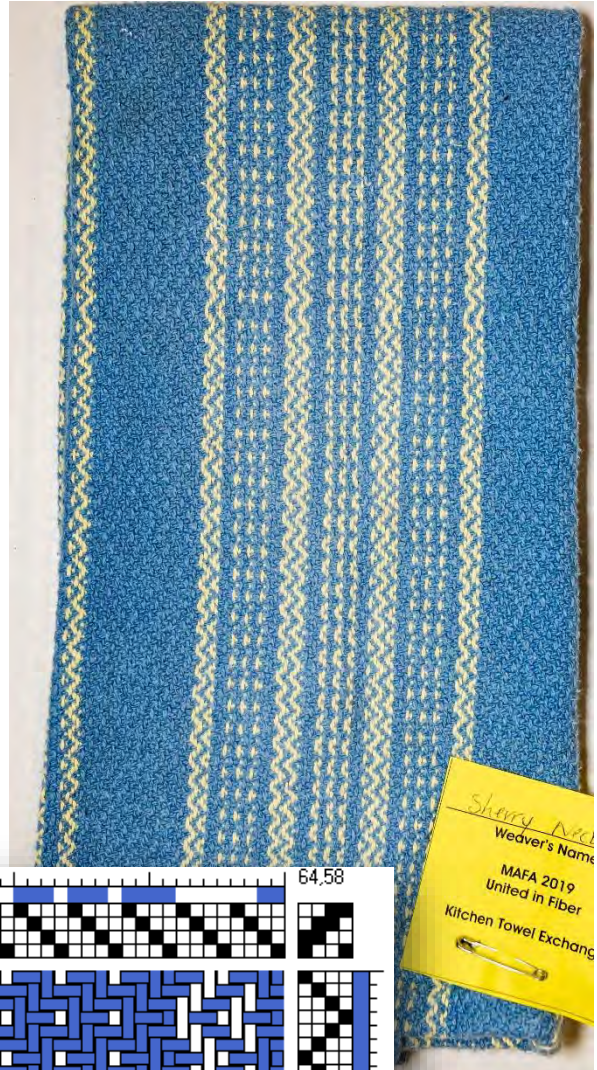
**Structure:** Twill

**Source:** *Handwoven*

**Warp:** 8/2 cotton

**Weft:** 8/2 cotton

**# Shafts:** 4



**Beth Palmer**  
**MAFA Associate Member**

**Structure:** Twill

**Source:** Traditional design

**Warp:** 10/2 cotton

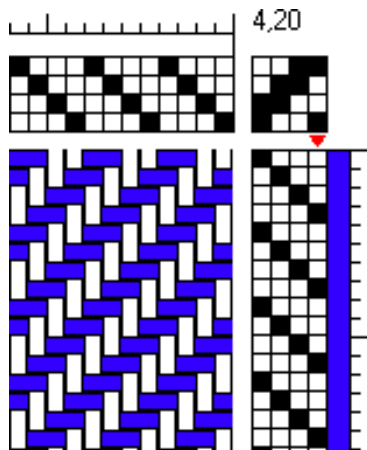
**Weft:** 10/2 cotton

**EPI:** 24

**# Ends:** 450

**# Shafts:** 4

**Weaver's notes:** The color sequence (Chasing Rainbows) comes from *The Weaver's Weevil* by Rebecca Fox and the warp yarn is 10/2 mercerized cotton from Lunatic Fringe (color spectrum). I used black for the weft and threaded on a straight draw.





# Nan Salomon Woodstock Weavers

**Structure:** Twill

**Source:** Davison, *A Handweaver's Pattern Book*, p.16, # 4/IV

**Warp:** 10/2, 11/2, 12/2 cotton

**Weft:** 10/2, 11/2, 12/2 cotton

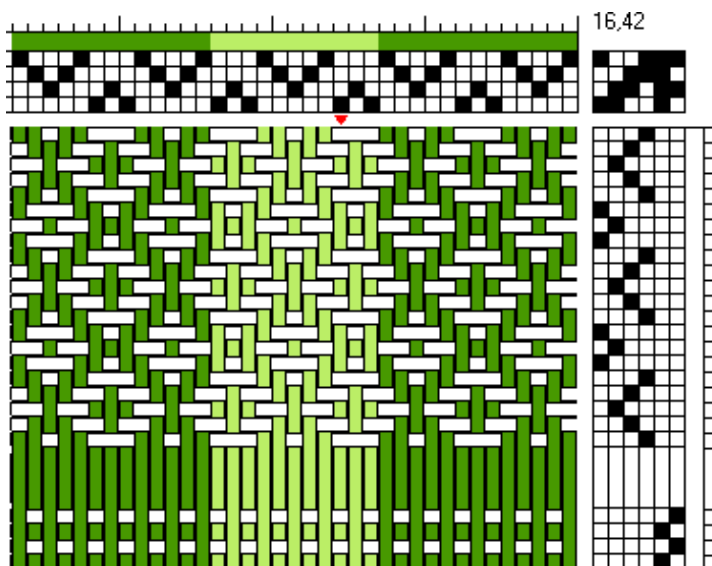
**EPI:** 26

**# Ends:** 397 +2 floating selvages = 399

**# Shafts:** 4

**Weaver's notes:** Dark stripes always begin & end on harness 4 in any number of repeats. Light stripes always begin & end on harness 1 in any number of repeats. The color order is given in the accompanying chart.

These yarns blend Sally Fox' green and brown special breed cotton with the finest Upland white cotton from the southern US. The deep shades are 50% colored cotton, 50% white; the pale shades are 12 1/2% colored cotton with 87% white. Once washed the yarn blooms and the colors darken. This towel has been washed.



**MAGIC COTTON DISHTOWEL**  
Color Order

WARP	WEFT
1 Floating Selvage Dark Green	
37 Dark Green	
11 Pale Green	1" Plain weave (Hem)
13 Dark Green	
11 Pale Brown	11/2" Dark Green
13 Dark Green	1 Repeat Pale Green
11 Pale Green	2 Repeats Dark Green
13 Dark Green	1 Repeat Pale Brown
11 Pale Brown	3 Repeats Dark Brown
13 Dark Green	1 Repeat Pale Brown
11 Pale Green	2 Repeats Dark Green
21 Dark Green	1 Repeat Pale Green
11 Pale Brown	
21 Dark Brown	25" Dark Green
11 Pale Brown	
21 Dark Green	1 Repeat Pale Green
11 Pale Green	2 Repeats Dark Green
13 Dark Green	1 Repeat Pale Brown
11 Pale Green	3 Repeats Dark Brown
13 Dark Green	1 Repeat Pale Brown
11 Pale Brown	2 Repeats Dark Green
13 Dark Green	1 Repeat Pale Brown
11 Pale Green	1 1/2" Dark Green
13 Dark Green	
11 Pale Brown	1" Plain Weave (Hem)
13 Dark Green	
11 Pale Green	
37 Dark Green	
1 Floating Selvage Dark Green	

# Jenny Sethman

## Loyalhannon Spinners

**Structure:** Twill

**Source:** Traditional design

**Warp:** 8/2 cottolin

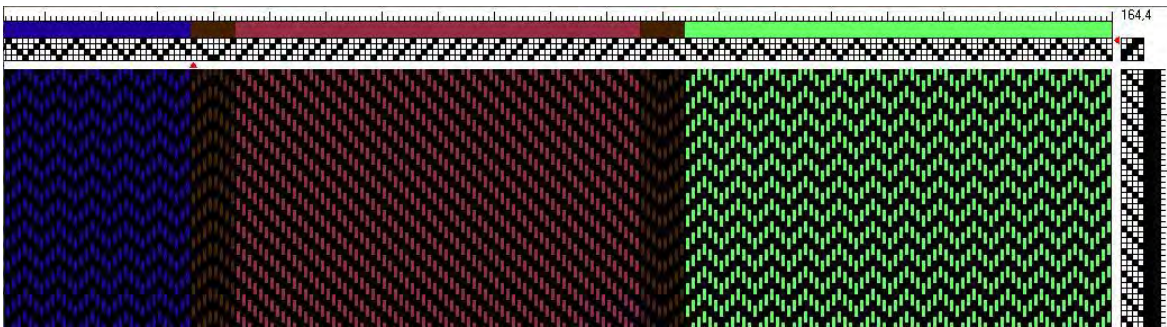
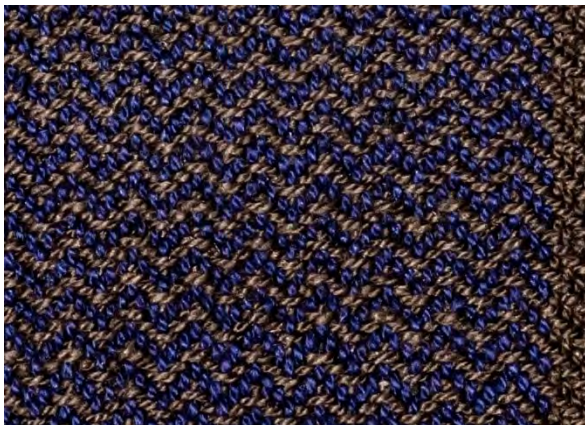
**Weft:** 8/2 cottolin

**EPI:** 20

**# Ends:** 400

**# Shafts:** 4

**Weaver's notes:** I modified this draft off of the towel created in the Vävstuga Basics class.





## Cindy Solomon

### Weavers Guild of Greater Baltimore

**Structure:** Plain Weave

**Source:** Jane Stafford Textiles Online  
Guild

**Warp:** 8/2 cotton, cottolin

**Weft:** 8/2 cottolin

**EPI:** 17.5

**# Ends:** 340

**# Shafts:** 4



**Weaver's notes:** Making the graphic square is more important than the actual PPI. If 19 PPI gives you a square graphic, then it's good.

It was fun to weave, my first attempt at using cottolin.

The draft actually calls for 18 EPI. I only had a 10 dent reed available, so I went with 17.5 EPI.

Loom width 18.89 inches in the reed, 17.5 inches off loom, and 16.5 inches finished.

Loom length 34.75 inches off loom (before hemming) and 29.75 inches finished and hemmed.



## Barbara Stam Warped Weavers Guild

**Structure:** Syncopated Threading: Rosepath

**Source:** Dixon, *The Handweaver's Pattern Directory*, p.217

**Warp:** 22/2 Cottolin, 8/2 Cotton, 20/2 Linen

**Weft:** 22/2 Cottolin, 10/3 Cotton, 8/2 Cotton

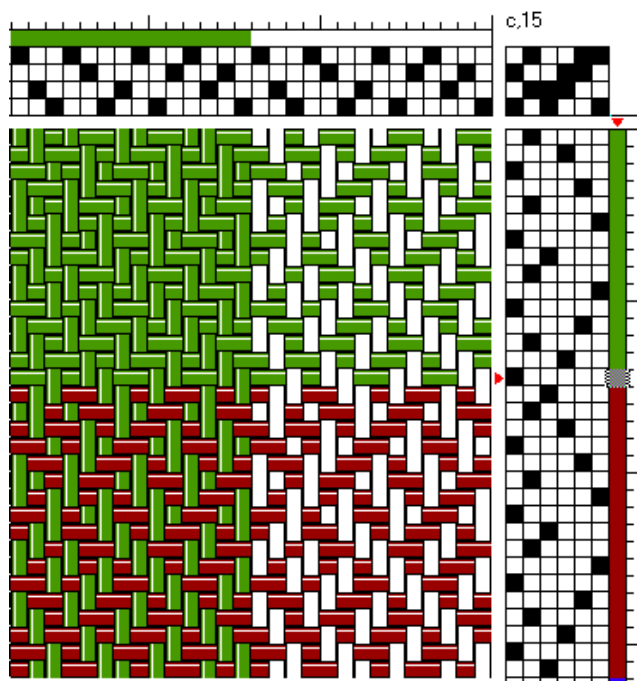
**EPI:** 15

**# Ends:** 276 + 4 floating selvages

**# Shafts:** 4

**Weaver's notes:** This was fun to weave because of the colorway of stripes, but the weave structure would be lost if just a single color were used.

The 20/2 linen was too fine to use with cottolin and 8/2 cotton.





**Susan Szczotka**  
**MAFA Associate Member**

**Structure:** Twill (Rosepath)

**Source:** Original design

**Warp:** 8/2 cotton

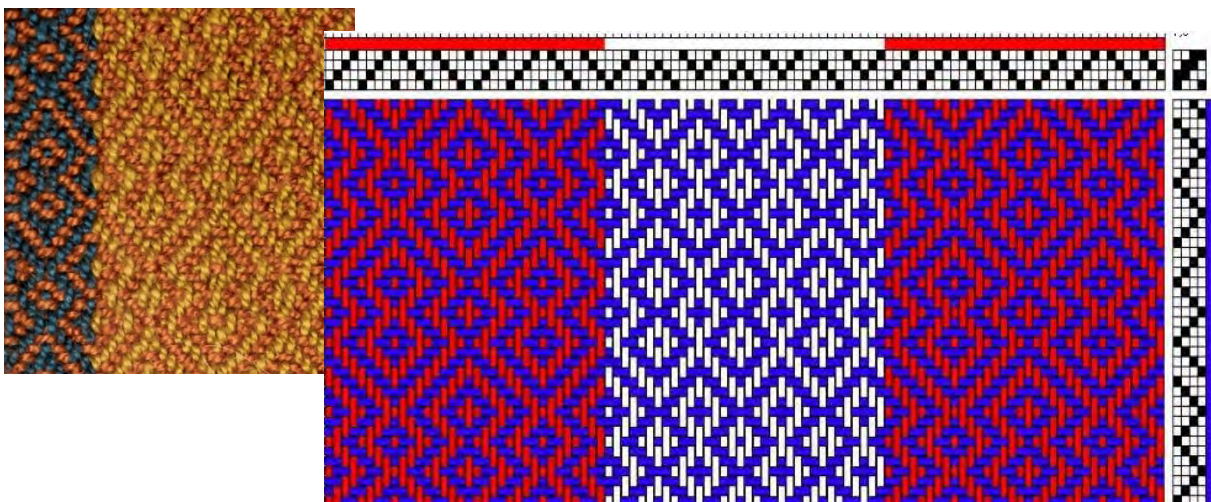
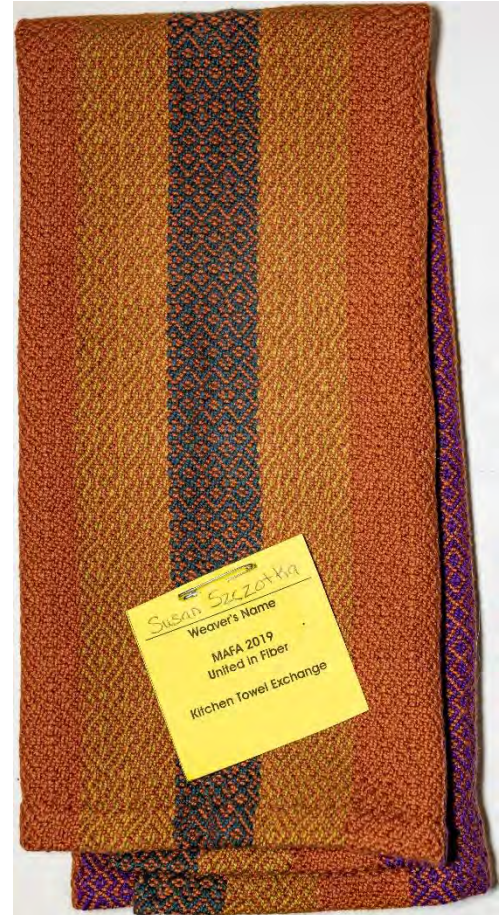
**Weft:** 8/2 cotton

**EPI:** 24

**# Ends:** 444 including floating selvages

**# Shafts:** 4

**Weaver's notes:** I saw this color palette on Pinterest and chose 4 different colors for the warp. (WEBS: Black Forest, Burnt Sienna, Tobacco and Eggplant.) The width of the stripes and colors can be adjusted to whatever you should desire. Each color stripe was 34 ends wide on my towel and I just alternated the two twills and arranged the colors symmetrically. I originally had planned to sley at 20 EPI but got carried away with the stripes and would have had a very wide towel. Changing to 24 EPI brought it back to a reasonable width. Either sett would work fine. Use a floating selvege on both sides.



# Chris Asmann

## Fiber Arts Network

**Structure:** Twill

**Source:** *Die Färbige Gewebmusterung* by Franz Donat, 1907

**Warp:** 16/2 cottolin

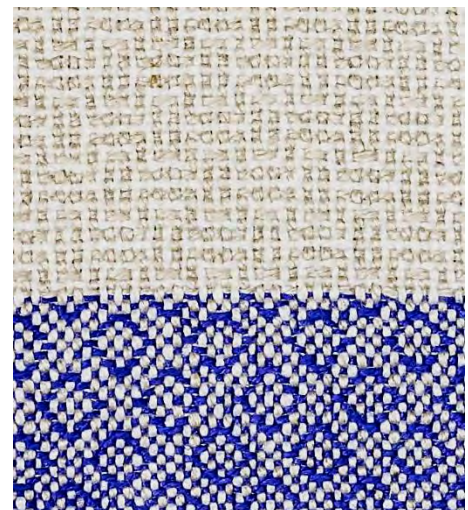
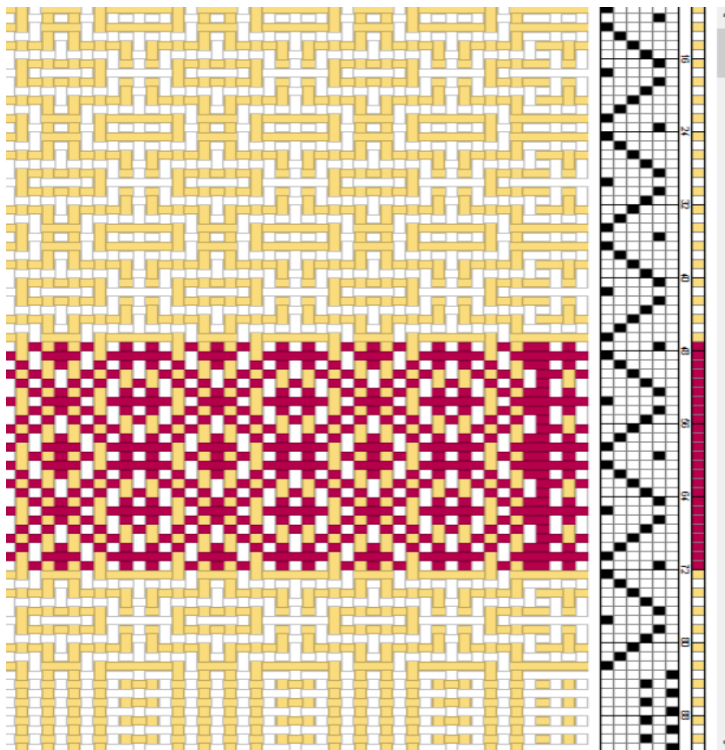
**Weft:** 16/2 linen

**EPI:** 24

**# Ends:** 482

**# Shafts:** 5

**Weaver's notes:** Linen warp bobbins had to be very wet to prevent loops in the selvedge. Tension was a problem throughout and I helped that by spraying the threads. The yarn seems too coarse to make a really nice towel.





# Aileen Campbell

## Fredericksburg Spinners and Weavers Guild

**Structure:** Crackle

**Source:** Traditional Design

**Warp:** 6.5/2 cotton

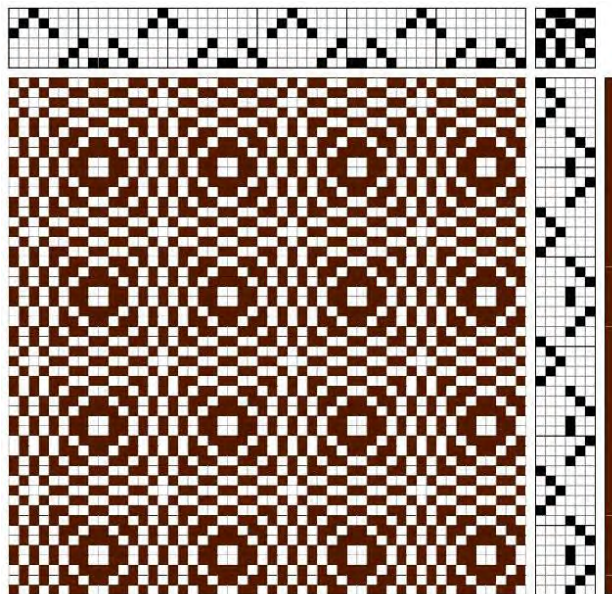
**Weft:** 6/2 cotton

**EPI:** 20

**# Ends:** 472

**# Shafts:** 6

**Weaver's notes:** I used cotton (unmercerized) for both warp and weft. Length shrinkage was close to 20% while width was a more expected 10%. I added a band woven using a tabby treadling at one end of the towel. An easy weave and the design is pleasantly different on each side. My color choice was natural for the warp and a brownish eggplant for the weft. Once woven, the brownish eggplant appears as a dark brown. Not a cheerful color but it won't show stains easily!





# Joanna Crosby

## Weavers Guild of Greater Baltimore

**Structure:** Plain Weave, Twill

**Source:** Original design

**Warp:** 10/2 cotton (mercerized and unmercerized)

**Weft:** 10/2 cotton (mercerized and unmercerized)

**EPI:** 24

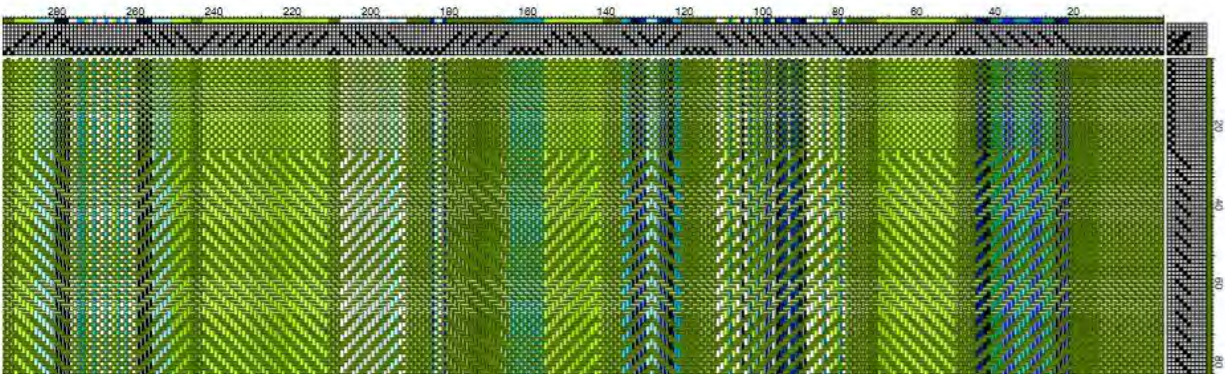
**# Ends:** 528

**# Shafts:** 6

**Weaver's notes:** Using the idea that if six colors is good, 60 would be better, I chose yarns from the blues and greens in my 10/2 stash, included cotton I had hand dyed, and wound various stripes onto the warping board, trying to balance colors and vary width of stripes. Although I warp back to front, I then threaded different designs grouping and separating as I thought looked nice. I varied stripes and complimented plain weave with two-two twill, sometimes rising, sometimes falling.

What has resulted is a one-of-a-kind towel that I couldn't reproduce if I wanted to!

The towel is machine hemmed, but with a foot peddle powered sewing machine, which I take to be about as hand made as using my loom. The draft file I have attached is a sample, not the whole towel.





**Sharon Korte**  
**MAFA Associate Member**

**Structure:** Twill

**Source:** Joyce Robards' Workshop,  
"Scandinavian Weaves"

**Warp:** 10/2 cotton

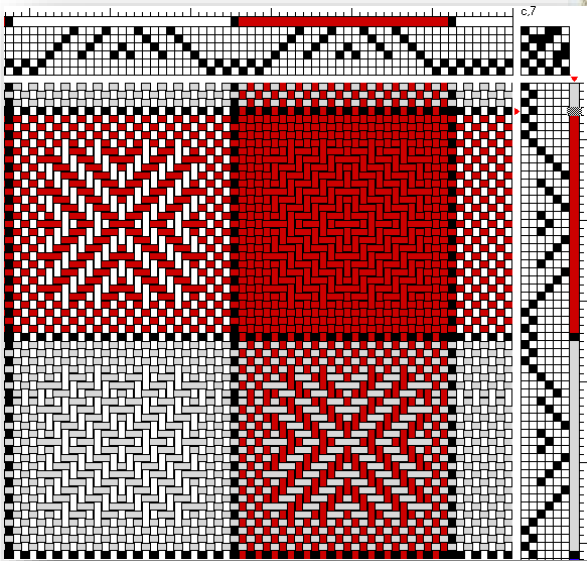
**Weft:** 10/2 cotton

**EPI:** 24

**# Ends:** 234

**# Shafts:** 6

**Weaver's notes:** Finished towel is 17.5"  
x 25.0"





## Elyse Rogers MAFA Associate Member

**Structure:** Twill

**Source:** Franz Donat #29911 on  
Handweaving.net and *Complex Weavers Journal*  
October 2015

**Warp:** 8/2 cotton

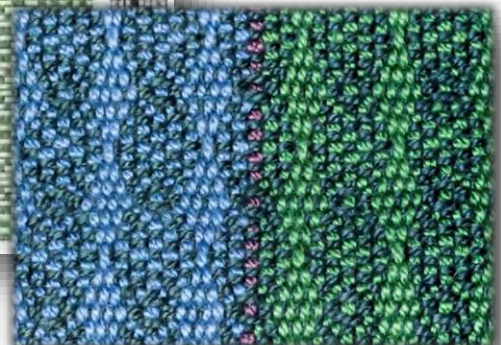
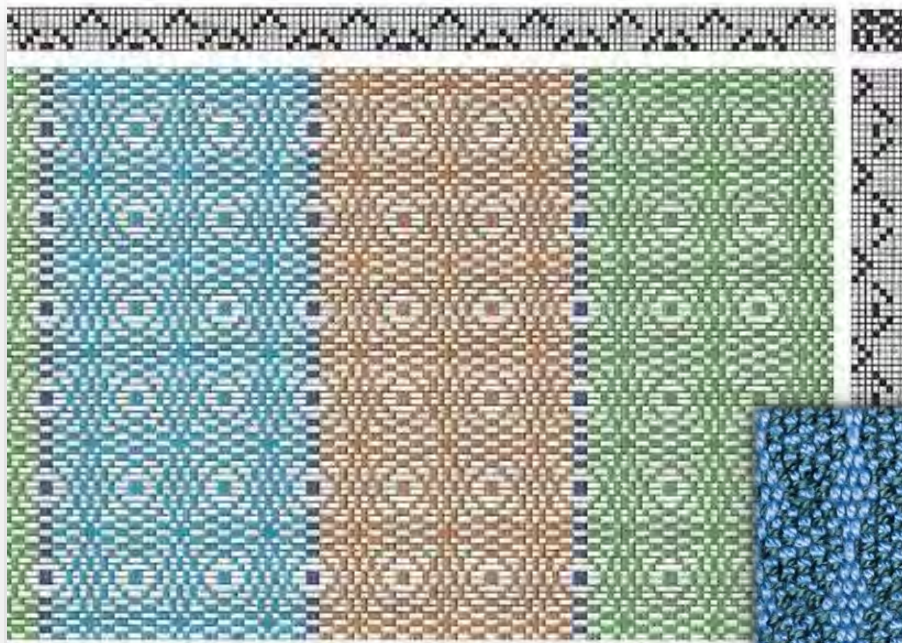
**Weft:** weft can be cotton (8/2) or cottolin (22/2)

**EPI:** 25

**# Ends:** 503 plus 2 floaters for 505 total

**# Shafts:** 6

**Weaver's notes:** I wove this at 25 epi so it would fit on my workshop loom. If width had not been an issue, I would have woven it at 24 epi.





## Elizabeth Watt

### MAFA Associate Member

**Structure:** Diversified Plain Weave

**Source:** Original design

**Warp:** 4/8 and 2/16 cotton

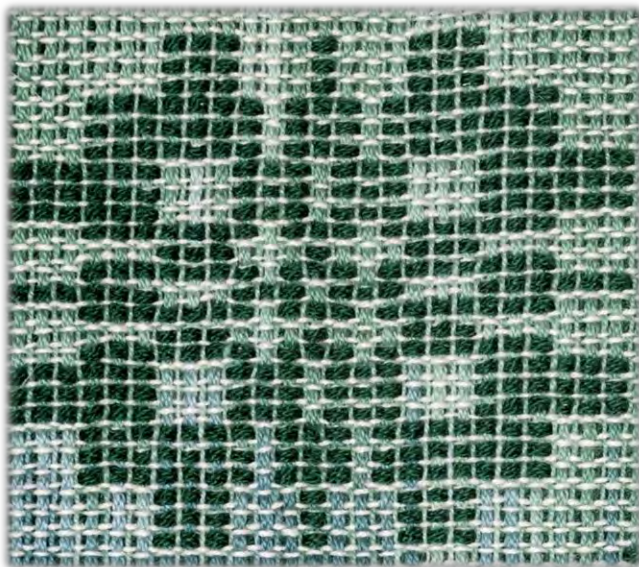
**Weft:** 4/8 and 2/16 cotton, 2/8 used doubled

**EPI:** 18

**# Ends:** 407

**# Shafts:** 6

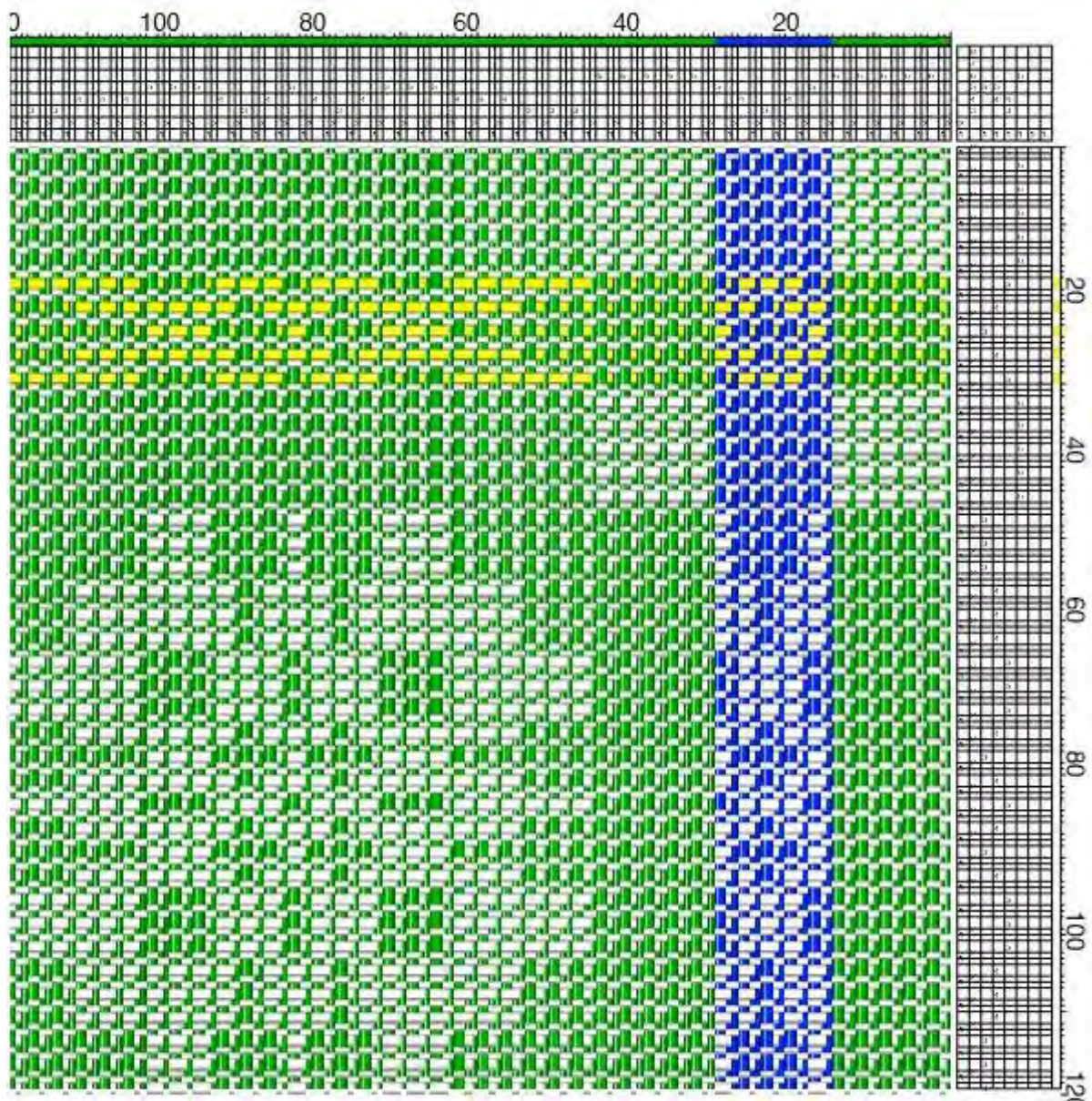
**Weaver's notes:** I like towels as usable samples of structures that are new to me because even a failure will probably still dry dishes. Diversified Plain Weave (using Madelyn Van der Hoogt's "new DPW threading and treadling" – see *Weaver's* Summer 1997) is a really fun structure I wanted to play with. It has a simple 3 thread unit in both warp and weft that lends itself to using block designs. A post on Facebook by Robyn Spady led me to a document on [handweaving.net](http://handweaving.net) – Block Drafts from Heinrich Leisy's Pattern Book – where I found a 4 block profile draft that appealed to me. I used Fibreworks to interpret it as a DPW draft. The warp is 1 thread thick (4/8 cotton) and 2 threads thin (2/16 cotton) repeated



across. I wound the 3 threads at once to make chains that I then handpainted using MX dyes in shades of green for the main warp and navy for accent stripes. I did 5 towels and a large sample on the warp, playing with different weft colours for each one. The weft sequence is 2 shots 2/16 on plain weave treadles followed by one shot of 4/8 on a pattern treadle. My Tempo Treadle was indispensable for keeping my place in the very long treadling



sequence. The neatest thing about this structure is the colour effect. There is very little blending of warp and pattern weft colours so choices that would otherwise get muddled in a weave structure like plain weave (e.g. red pattern on the green background) actually work quite well. The thin threads are thin enough that they don't seriously skew the background colour, either, though next time I might try a thin weft in a colour and value close to the warp colours to make it disappear even more and I might try an even finer thin weft (2/20 or 2/30). Note that the first towel looked sleazy on the loom so I cut it off and washed it to check. It shrank quite a bit in both length and width and filled in nicely with a beautiful hand.





# Ann Guralnick

## Weavers Guild of Greater Baltimore

**Structure:** Plain Weave, Swedish Lace

**Source:** *Handwoven's Design Collection 16* and Leslie Voiers, *Conversations & Notes on Log Cabin*

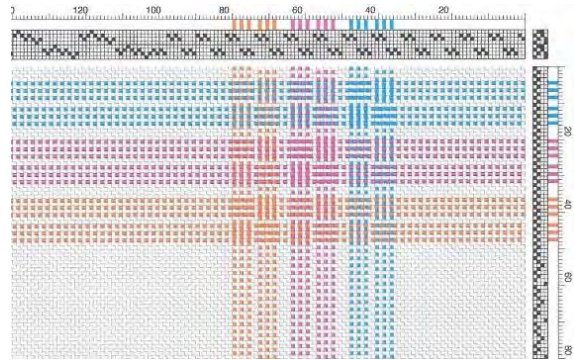
**Warp:** 16/2 cotton, linen

**Weft:** 16/2 cotton

**EPI:** 30

**# Ends:** 656

**# Shafts:** 8, but could be woven on 4



**Weaver's notes:** Towels are a bit on the wide side. Could have made them narrower and/or longer as they came out rather square.

**Treadling:** Woven in plain weave for 40 picks white, Turq/White, White/Turq 5 times, 14 picks white, Pink/White, White/Pink 5 times, 14 picks white, Orange/White, White/Orange 5 times, 22 picks of white, 11" of Swiss Lace pattern and reverse. 1" hems woven with 24/2 cotton. Hems sewn by hand.



### Color and Weave Towels Ann Guralnick

**Fibers:** 16/2 unmercerized Cotton, bleached, 6,690 ypp and 16/2 unmercerized Cotton in Orange, Turquoise, and Pink 6,720 ypp

**Warp:** 16/2 Bockens cotton from Vavstuga and Lone Star Loom Room #0003  
16/2 cotton from The Mannings in Orange #1430 and Peacock. 16/2 Hot Pink unmercerized Bockens cotton from Vavstuga, #31.  
656 ends  
5 towels warp length - each woven 31" long plus 1 1/2" hems  
(actually woven much shorter so able to get 6 towels with 1" hems)  
6 yd warp

#### Warp Color Order

Color	x5	x6	x5	x6	x5	x6	x5	x6	x5	x6	x5	x6								
White	60	1	1	20	1	1	20	1	1	312	1	1	20	1	1	20	1	1	60	584
Turquoise		1	1												3	1				24
Pink				1	1								1	1						24
Orange																				24
Total						1	1		1	1										656

**Weft:** Same as warp.

**Weave structure:**  
Plain weave borders with a center field of Swiss Lace.

**Sett:** 30 ends per inch  
width in reed = 21.8"  
sleyed 2 per dent in a 15 dent per inch reed

**Loom:** 8 shaft, 12 treadle jack loom

**Heddles:** Shaft #1 = 14  
Shaft #2 = 151  
Shaft #3 = 150  
Shaft #4 = 13  
Shaft #5 = 13  
Shaft #6 = 151  
Shaft #7 = 151  
Shaft #8 = 13

**Threading:** See attached drawdown. I expanded the four shaft draft to eight shafts to decrease the number of heddles required on shafts 2 & 3.

**Tie-Up:** See attached drawdown.

## Bethany Garner

### MAFA Associate Member

**Structure:** Twill

**Source:** Inspired by and adapted from “Cally’s Color Gamp in Twill,” by Cally Booker

**Warp:** 2/8 cotton (Brassard)

**Weft:** 2/8 cotton (Brassard)

**EPI:** 20

**# Ends:** 420

**# Shafts:** 8. With an 8-shaft point twill you have a wide variety of tie-up/treadling possibilities

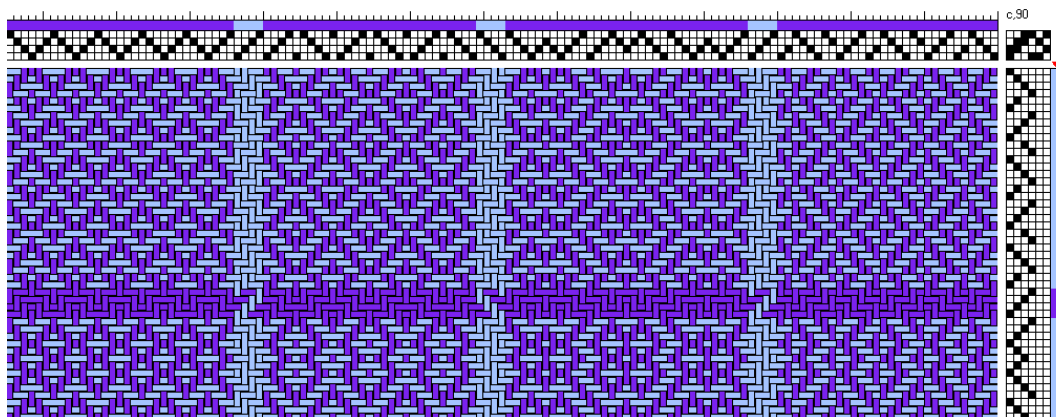
**Weaver’s notes:** This was a warp and project that was my first exploration of a complex (for me) gamp.



*Editor’s Note – Since we are missing a photo of Bethany’s towel, here’s a photo courtesy of Cally Booker. See Cally’s website at <https://weavingspace.co.uk/blog/designing-a-twill-gamp-part-1/>*

While a newer weaver, and always trying new things, I loved working on a twill sampler with friend and weaving mentor Jane Stafford via her Canadian Online Guild. The resulting gamp for this set of four towels was inspired by Cally Booker’s “Colour Gamp in Twill” and used some of my favorite colors – blue and purple. The project sampling on a Guild loom was great fun!

There is a band of mixed colors in the center of the towel that is playful, but I would not include that again...love the playful darker bands that are two colors interacting with each other. *Editor’s Note – If you were the lucky recipient of this towel, please take a photo and send it to us!*



*Generic twill gamp*



# Cuyler Augustino

## Frances Irwin Handweavers

**Structure:** Twill

**Source:** *18 Towels on Four Warps, One Tie Up*, by Carol Berry

**Warp:** 8/2 cotton

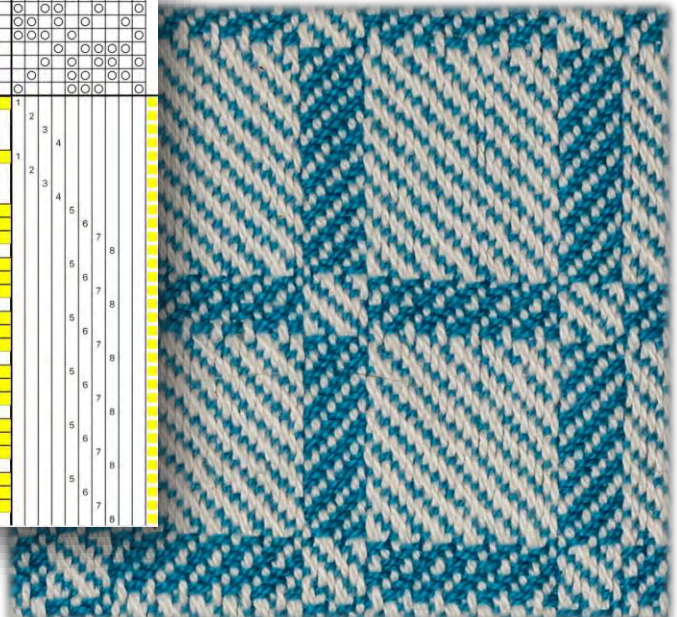
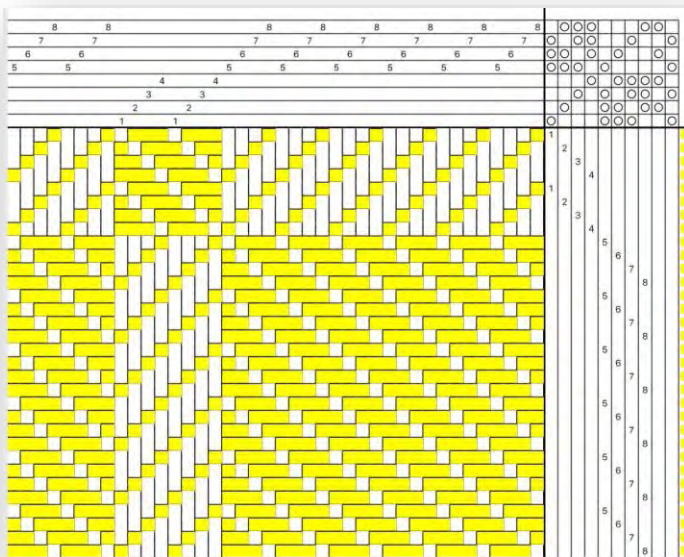
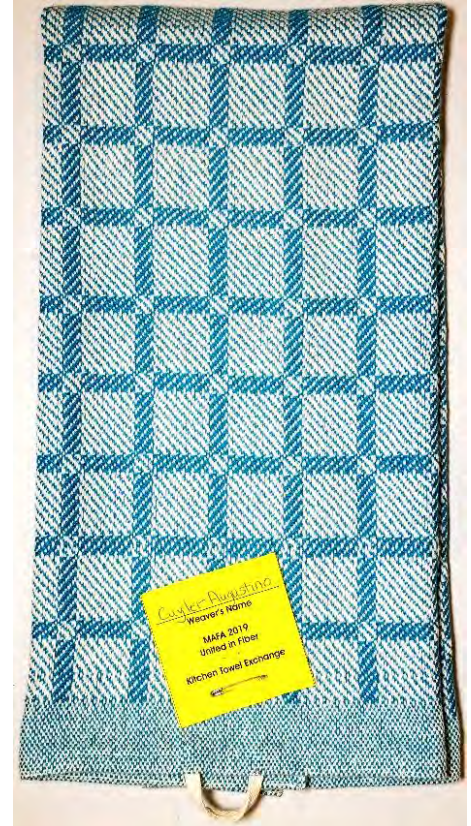
**Weft:** 8/2 cotton

**EPI:** 20

**# Ends:** 420 + 2 floats

**# Shafts:** 8

**Weaver's notes:** Block twill is fun to play with, especially with colorways. Used only one color for warp, but is great fun in color stripes. I chose this pattern particularly to reacquaint myself with profile draft, though the draft attached is a full draft/draw down. Started and finished with plain weave hems using 8/2 cotton, but could have used sewing thread to reduce bulk.





## Nanette Baumgardner Harmony Weavers Guild

**Structure:** Twill

**Source:** Original design

**Warp:** 22/2 cottolin (Bockens Nialin)

**Weft:** 22/2 cottolin (Bockens Nialin )

**EPI:** 24

**# Ends:** 492

**# Shafts:** 8

**Weaver's notes:** The hand-painted stripes were dyed using Procion MX Fiber Reactive dyes.

I used a different color weft for each towel.





# Becky Dahlman

## Potomac Fiber Arts Guild

**Structure:** Twill

**Source:** *A Weaver's Book of 8-Shaft Patterns*, Carol Strickler

**Warp:** 22/2 cottolin

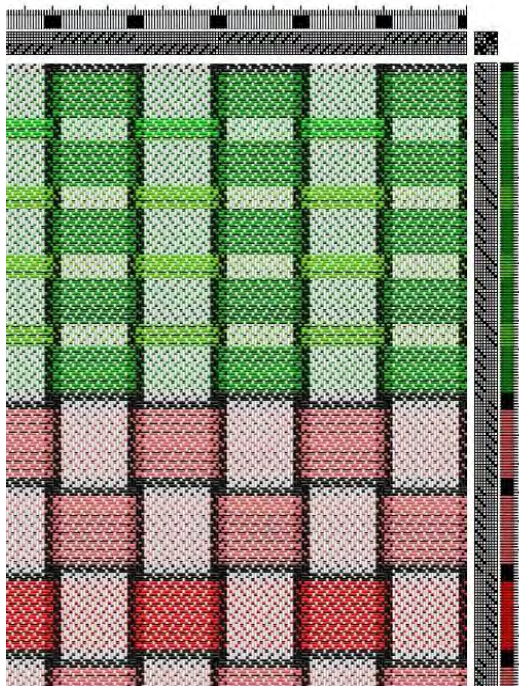
**Weft:** 22/2 cottolin

**EPI:** 24

**# Ends:** 450

**# Shafts:** 8

**Weaver's notes:** I started out with Strickler, *A Weaver's Book of 8-Shaft Patterns*, #246, and as I was working with two different shades of red in the weft, I realized how much it reminded me of watermelon. I decided to add some lines in shades of green to represent the rind, along with the reds in the center (and the little bits of black like seeds).



Becky Dahlman  
Weaver's Name  
MAFA 2019  
United in Fiber  
Kitchen Towel Exchange



# Patricia Doroski

## Paumanok Weavers Guild

**Structure:** Twill

**Source:** *The Best of Weaver's: Twill Thrills*, p. 52, "A Designer's Heart's Desire" by Kim Marie Bunke

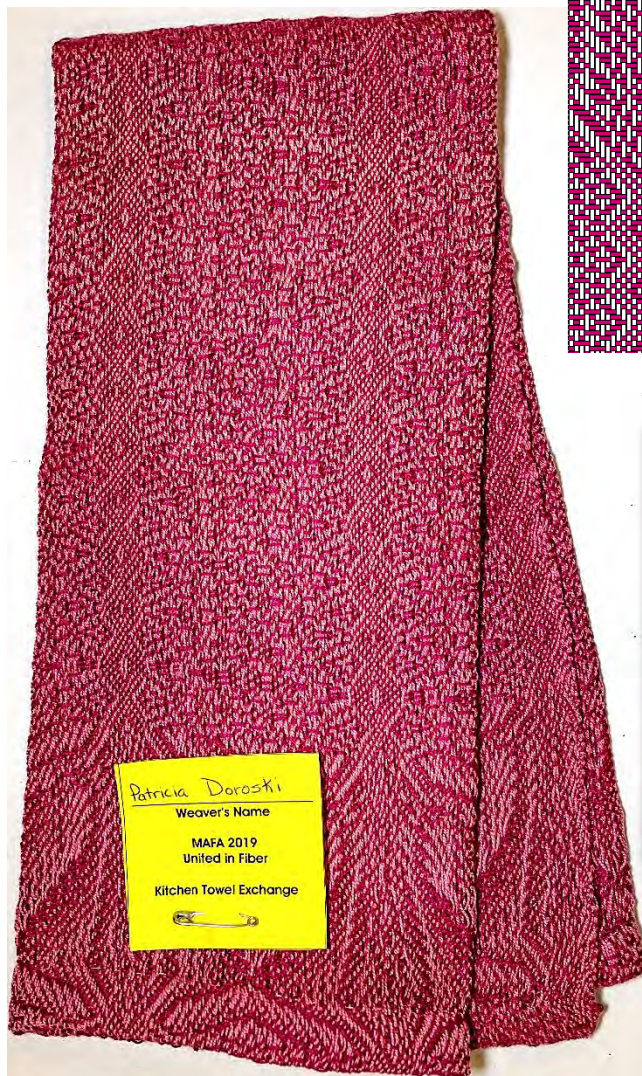
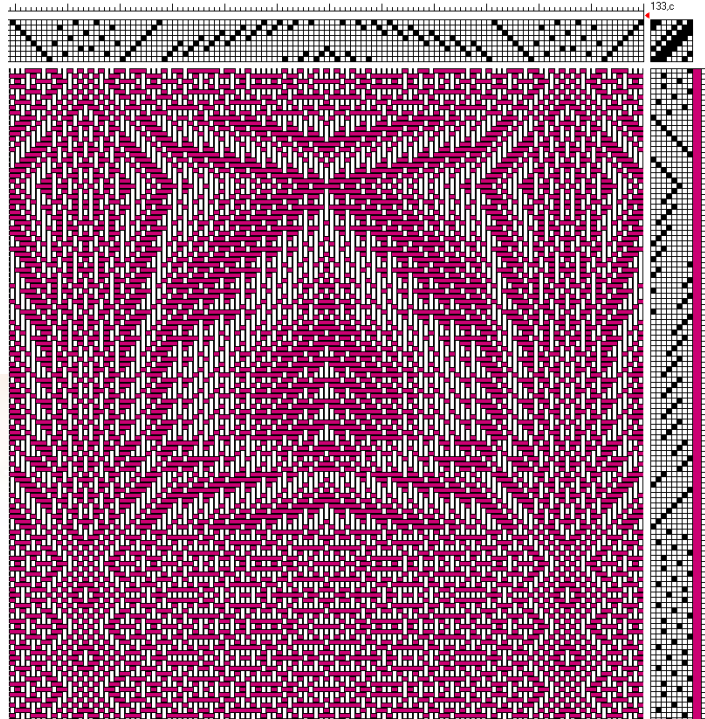
**Warp:** 10/2 cotton

**Weft:** 10/2 cotton

**EPI:** 24

**# Ends:** 478

**# Shafts:** 8





**Nora Eason**  
**MAFA Associate Member**

**Structure:** Twill

**Source:** Traditional design

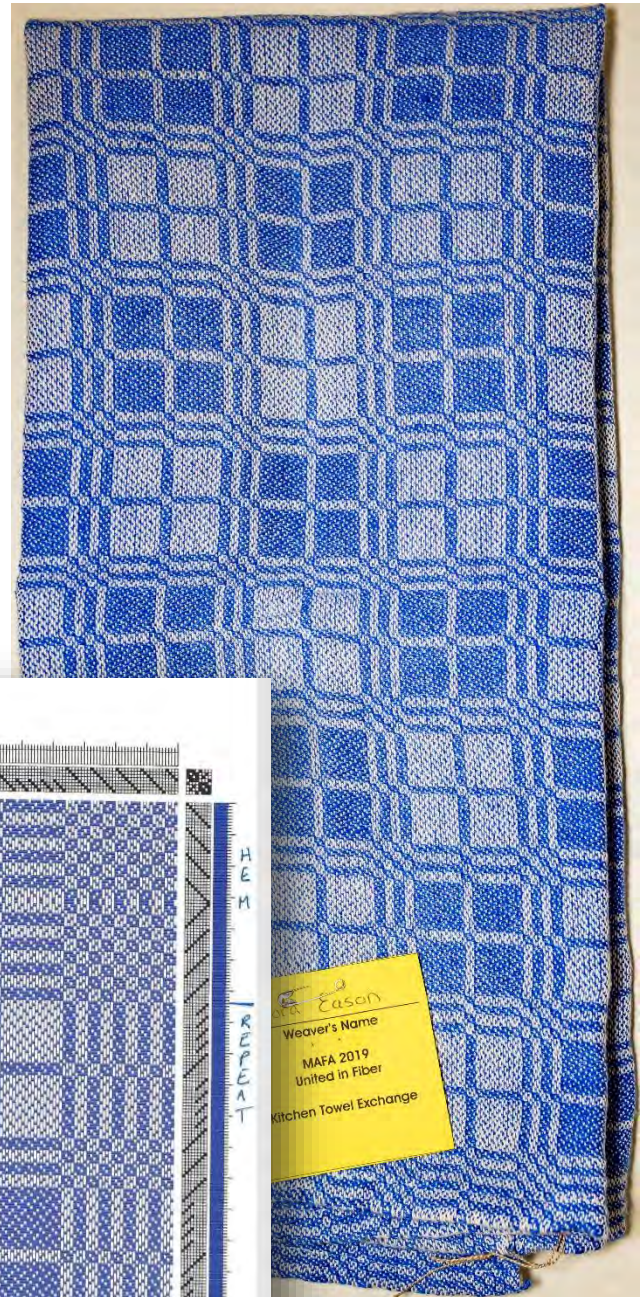
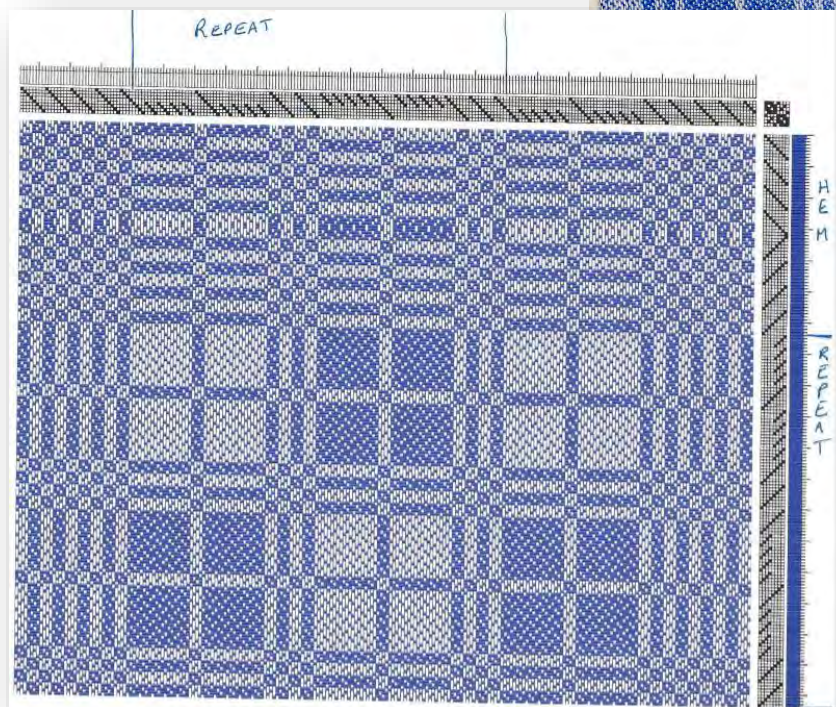
**Warp:** 20/2 cotton (Bockens)

**Weft:** 16/1 linen (Bockens Line Linen)

**EPI:** 30

**# Ends:** 660

**# Shafts:** 8





# Cindy French

## Williamsburg Spinners & Weavers Guild

**Structure:** Twill

**Source:** Tom Knisely's Workshop, "Weaving on a Straight Eight." Class instruction booklet

**Warp:** 8/2 cotton

**Weft:** 8/2 cotton

**EPI:** 20

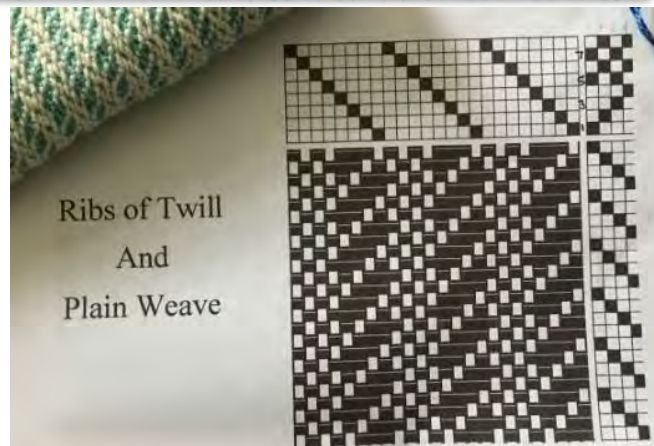
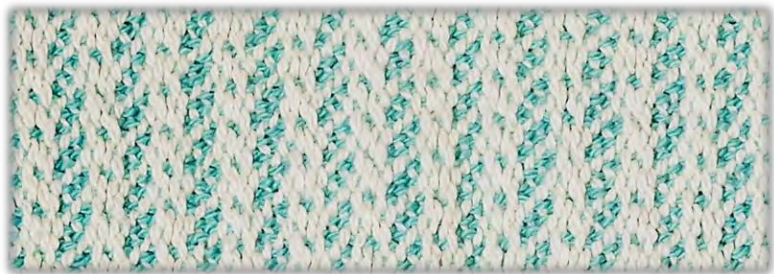
**# Ends:** 402

**# Shafts:** 8

**Weaver's notes:** Really enjoyed Tom Knisely's "Weaving on a Straight Eight" class taken during the 2017 MAFA conference. Wanted to weave something from his class booklet and chose the pattern 'Ribbs of Twill and Plain Weave.' It's a nice easy piece to weave, and the treadling is super simple on a floor loom, just 1,2,3,4. The threading is also super easy, being a straight 8.

This pattern makes a great dishtowel, very thirsty so it works beautifully. I used 20 epi with 8/2 cotton because I find this makes an absorbent dishtowel.

I warped 20 inches wide in reed and wove 34" in length. 1" hem at each end - twice folded hem, hand stitched with cotton sewing thread. Washed and dried twice in washing machine on warm, and dryer on regular heat. Size of finished towel: 17" x 27".





# Alison Ginn

## MAFA Associate Member

**Structure:** Summer & Winter

**Source:** Inspired by *Handwoven* Sept/Oct 2003, "It's Teatime! Summer and Winter Tea Towels," by Sheila O'Hara

**Warp:** 2/8 (3360 yd/lb) cotton

**Weft:** 2/8 (3360 yd/lb) cotton

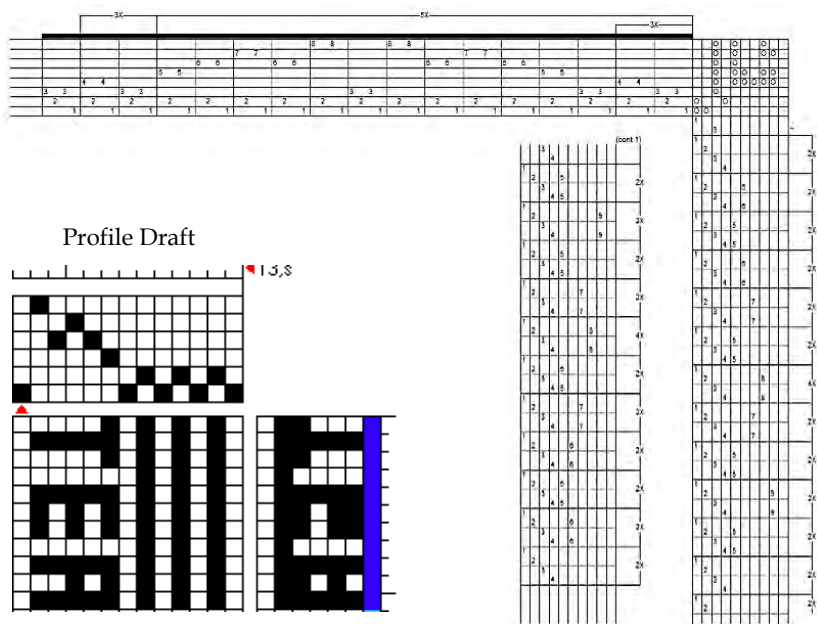
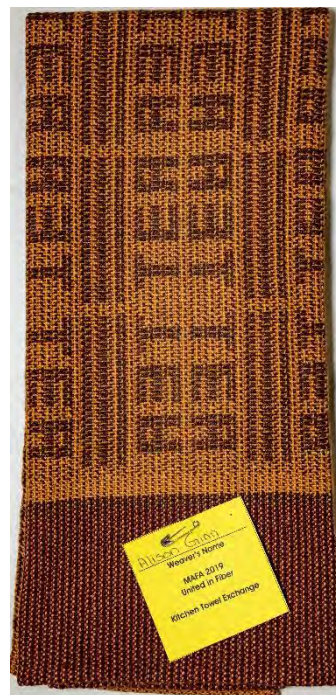
**EPI:** 18

**# Ends:** 388

**# Shafts:** 8

**Weaver's notes:** We are big tea lovers in the family – so this towel in *Handwoven* S/O 2003 caught my eye.

- I have used this draft numerous times over the years – in various colours and weights of fibre – or towels and as material for tray mats, tea cozies, market bags, etc.
- for this set of towels, I returned to colours similar to those in the original article, but in Brassard 8/2 cotton, not 10/2 cotton:  
warp: brun moyen, rouille & orange brûlé  
weft: magenta, brun moyen (pattern), orange brûlé



(tabby)

# Karel Henneberger

## Central Pennsylvania Guild of Handweavers, Weaver's Roundtable

**Structure:** Twill

**Source:** Traditional design

**Warp:** 10/2 white, black, and grays Perle cotton + 5/2 red Perle cotton

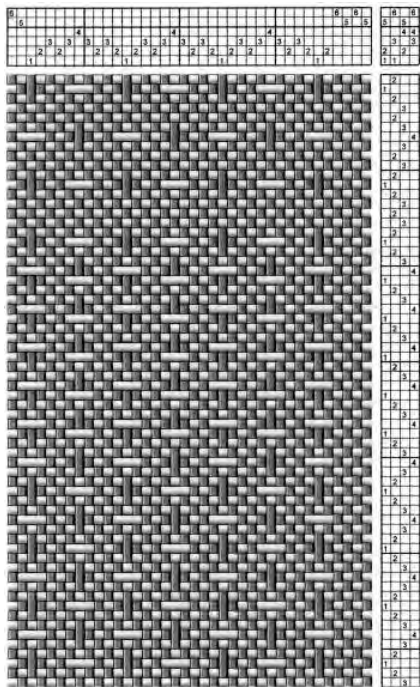
**Weft:** 10/2 gray shades/white Perle cotton + 8/2 red Perle cotton

**EPI:** 26

**# Ends:** 544

**# Shafts:** 8

**Weaver's notes:** I wanted to use the 'Netting A' from Davison's book, page 95, but didn't want to have to move heddles, so I used shafts 7 and 8 to substitute for shafts 2 and 3 when necessary. I also wanted a small selvedge and used shafts 5 and 6 for those. I tried three treadlings, but found the point twill treadling gave the best all-over texture I wanted. I had purchased the multiple shades of gray at



the last MAFA Conference and used them for another project. I still had enough to weave this towel. I did have to fudge on the weft as I alternated white with what grays I had left. I used the Fibonacci sequence to design the red stripes for an accent and used a heavier thread for added texture. I am satisfied with the 'modern' appearance of the towel and may do more, though I think I'll use a smaller accent thread as I'm not sure the 8/2 worked as well as I had hoped.





# Kathleen Kalmar

## MAFA Associate Member

**Structure:** Dimity

**Source:** Marjie Thompson, "Forgotten Weaves" workshop

**Warp:** blue 16/2 and white 20/2 cotton

**Weft:** white 20/2 cotton

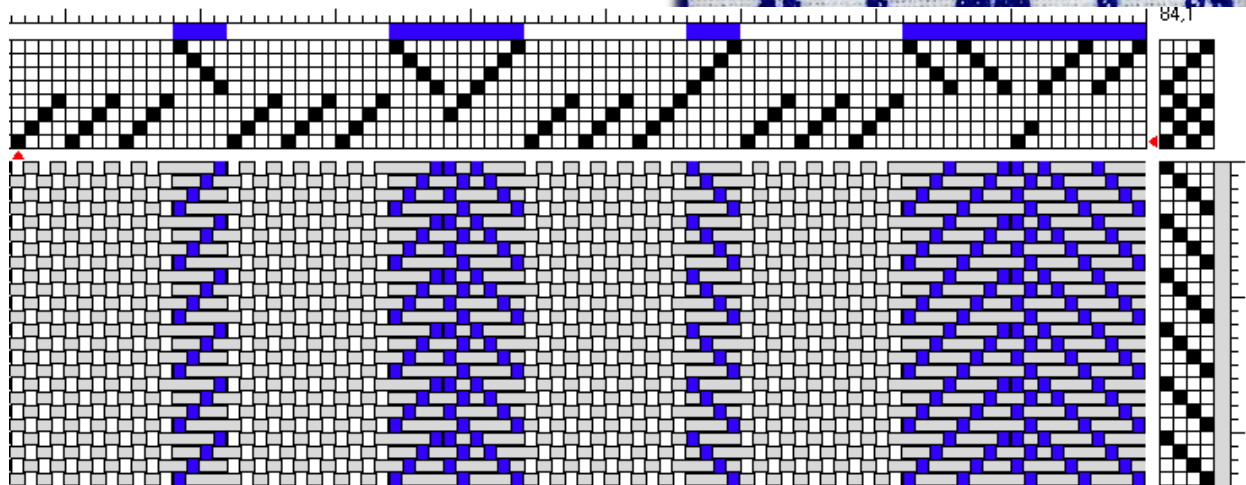
**EPI:** blue is 60, white is 30

**# Ends:** 690

**# Shafts:** 8

**Weaver's notes:** Towel is 8 repeats plus 18 ends to balance. Was 17.83" in 15 dent reed. The warp had 418 ends of white 20/2 @ 30 EPI and 272 ends of 16/2 blue @ 60 EPI.

From the manuscripts of J. P. Meyer and F. Walbert and Jacob Angstadt. I got this draft from a Marjie Thompson workshop.



# Louise Lawrence

## Weavers Guild of Greater Baltimore

**Structure:** Summer & Winter

**Source:** Inspired by *Handwoven* Jan/Feb 2015, "Summer and Winter with a Twist Polka-Dot Towels" by Linda Adamson

**Warp:** 10/2 cotton

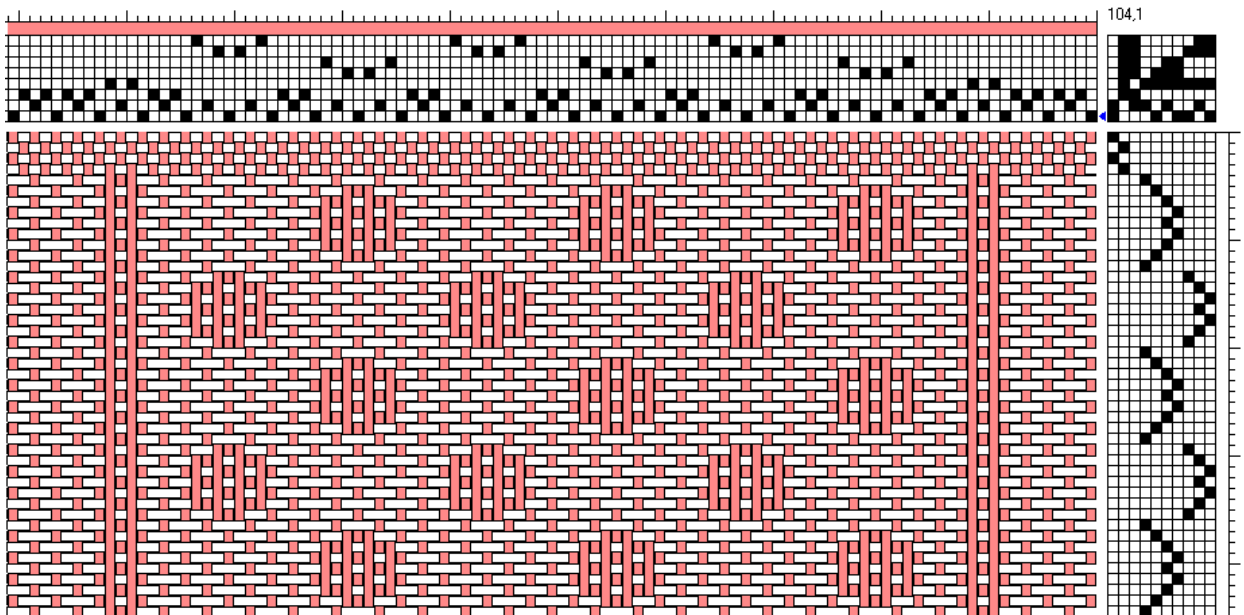
**Weft:** 6/2 and 10/2 cotton

**EPI:** 20

**# Ends:** 415

**# Shafts:** 8

**Weaver's notes:** I followed one of the *Handwoven* patterns for my exchange towel. For others on warp I randomized – using 3 colors, adding alternating stripes, etc. Made towels more fun in my opinion.





**Deborah Lawson**  
**Central PA Guild of Handweavers, Weaver's Roundtable**

**Structure:** Twill

**Source:** Traditional design

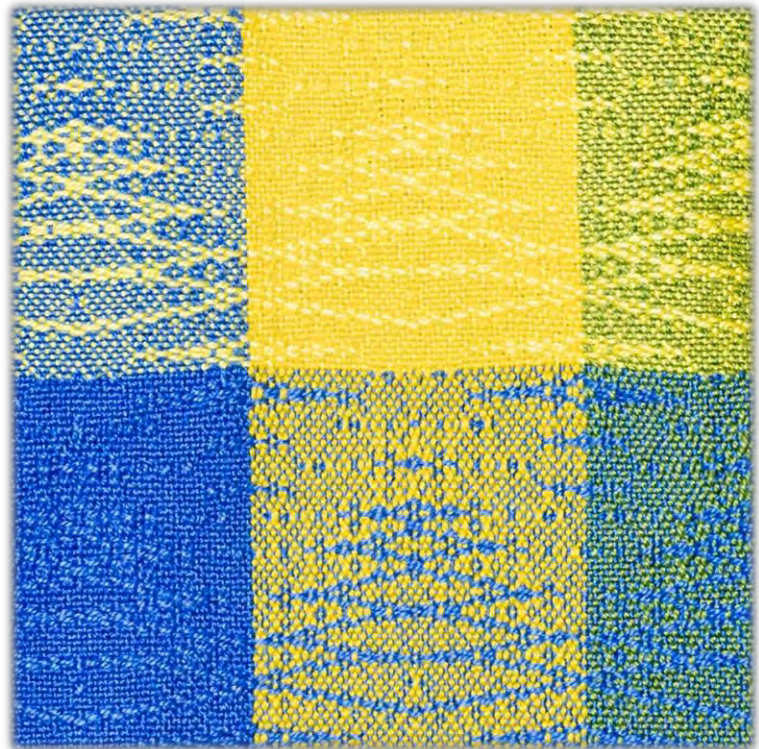
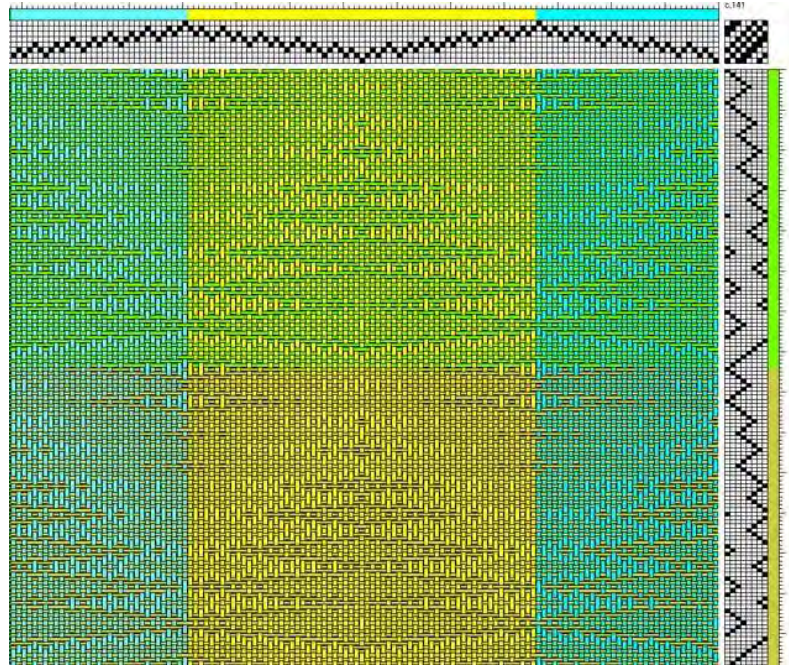
**Warp:** 30/2 cotton

**Weft:** 30/2 cotton

**EPI:** 36

**# Ends:** 595

**# Shafts:** 8





# Carolyn Moore

## The Handweavers Guild of the New River Valley

**Structure:** Twill

**Source:** *A Weaver's Book of 8-Shaft Patterns* by Carol Strickler.  
#193

**Warp:** 8/2 Cotton

**Weft:** 8/2 Cotton

**EPI:** 24

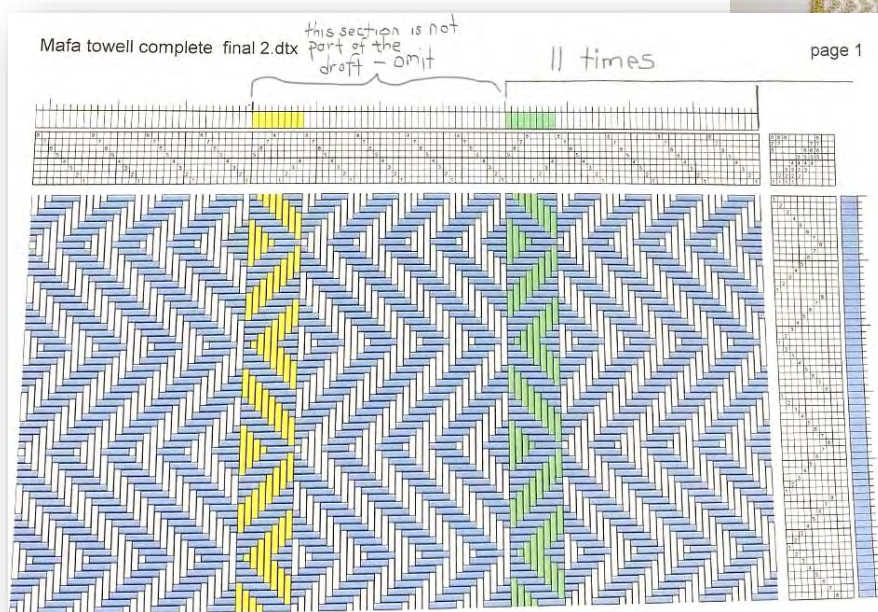
**# Ends:** 476

**# Shafts:** 8



**Weaver's notes:** The section on the draft that is labeled to be omitted was included only to illustrate that I used a variety of colors for the last 8 threads of each 40-thread unit.

I used unmercerized cotton for both warp and weft.





**Sandra Petty**  
**Tavern Spinners & Weavers Guild,**  
**Williamsburg Spinners & Weavers Guild**

**Structure:** Twill

**Source:** *A Weaver's Book of 8-Shaft Patterns*, by Carol Strickler. # 175

**Warp:** 8/2 cotton

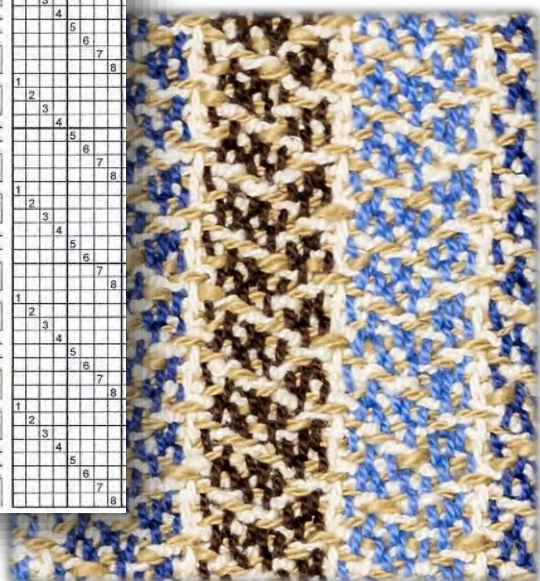
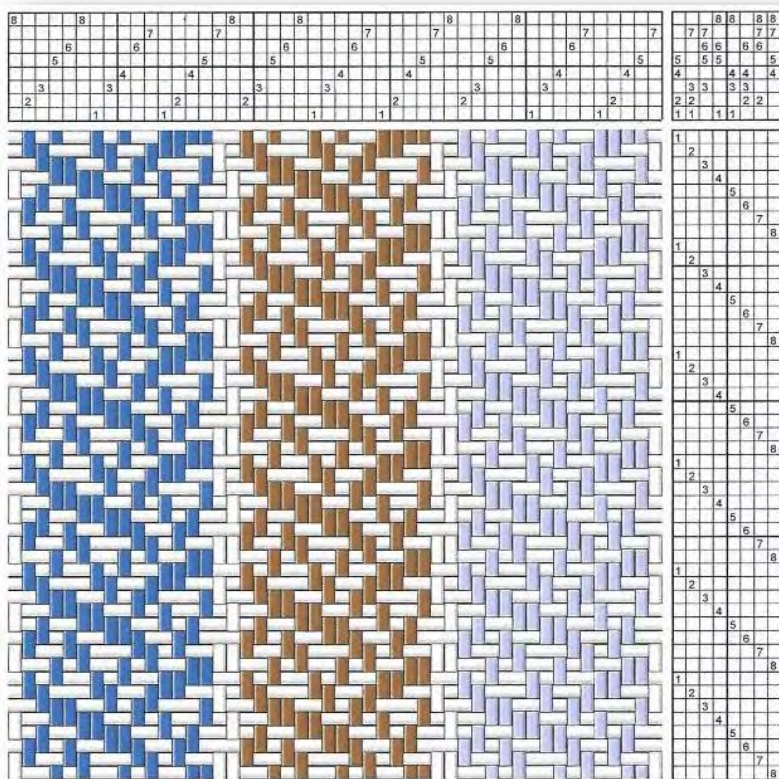
**Weft:** 8/2 alternating with flake cotton

**EPI:** 20

**# Ends:** 400 plus 2 floating selvedge

**# Shafts:** 8

**Weaver's notes:** A great way to use up small quantities of yarn





**Mary Pflueger**  
**Weavers Guild of Greater Baltimore**

**Structure:** Shadow Weave

**Source:** *A Weaver's Book of 8-Shaft Patterns*,  
Carol Strickler. #286

**Warp:** 8/2 (3360 yards/lb) cotton

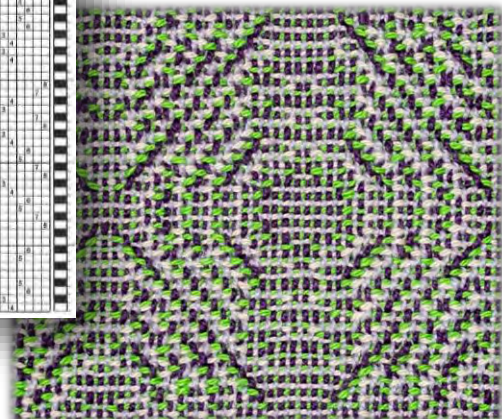
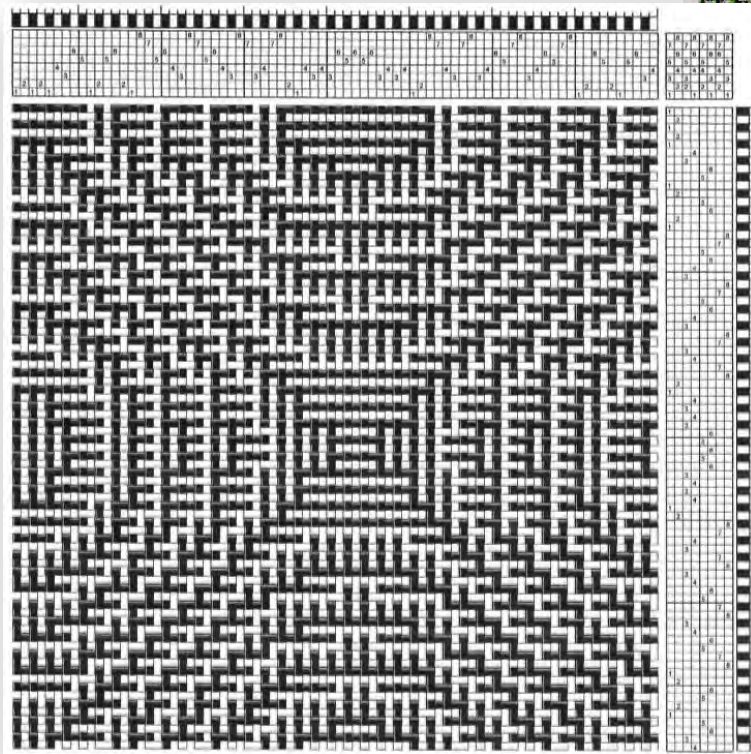
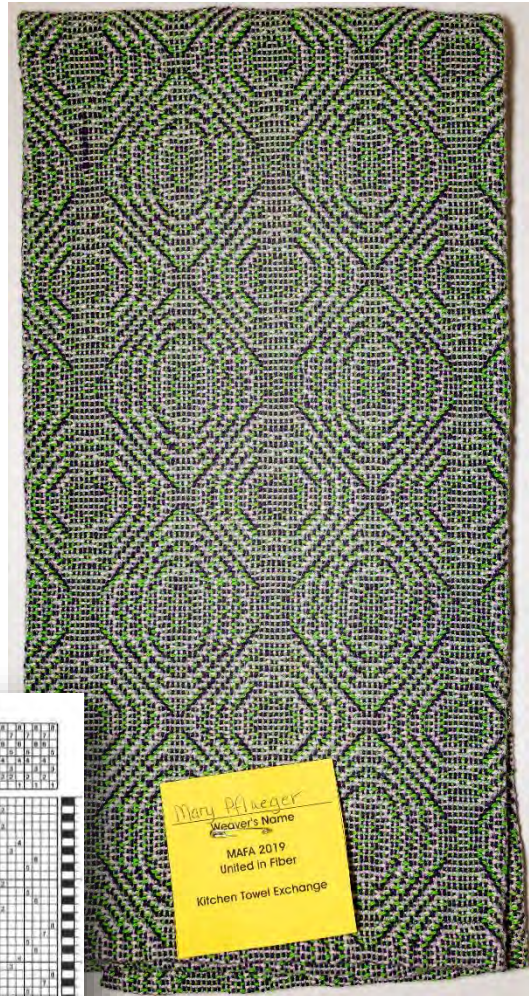
**Weft:** 8/2 (3360 yards/lb) cotton

**EPI:** 24

**# Ends:** 546

**# Shafts:** 8

**Weaver's notes:** This towel was woven  
with 4 colors, 2 in the warp and 2 in the weft.





# Melanie Polutta

## Foothills Spinners & Weavers Guild

**Structure:** Twill

**Source:** *A Weaver's Book of 8 Shaft Patterns* by  
Carol Strickler. # 94s

**Warp:** 8/2 cotton

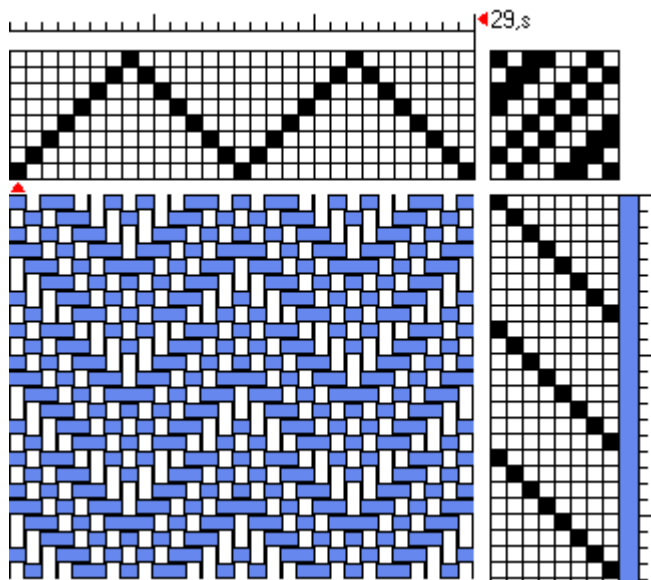
**Weft:** 8/2 cotton

**EPI:** 28

**# Ends:** 540

**# Shafts:** 8

**Weaver's notes:** I did a straight tabby weave hem for approximately 1-1.5 inches at the beginning and end of the towel. I used a weft that was laceweight in order to have a hem that was flatter when I folded it over twice.



# Judy Rhoades

## Weavers Guild of Greater Baltimore

**Structure:** Twill

**Source:** *A Weaver's Book of 8-shaft Patterns* by Carol Strickler. point twill, #97

**Warp:** 10/2 cotton

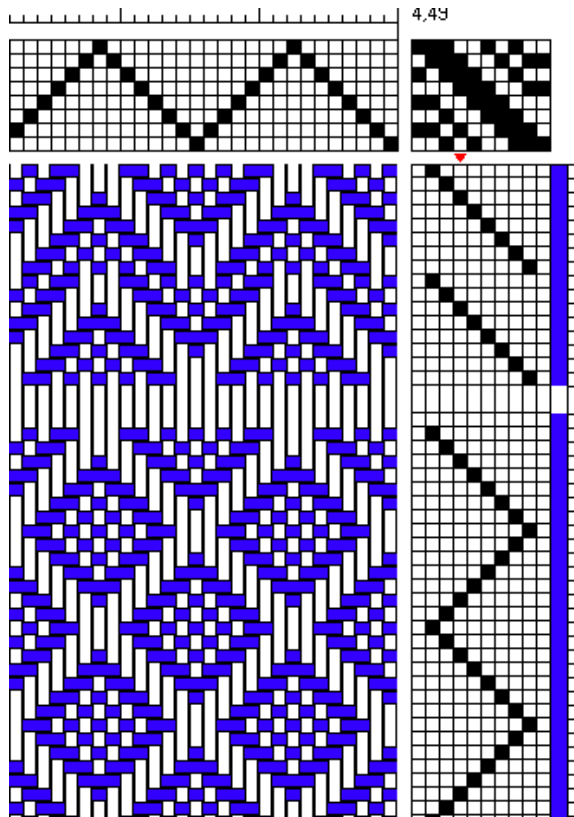
**Weft:** 12/2 (?...stash) cotton

**EPI:** 30

**# Ends:** 786 (ran out of warp or would have made wider...again, stash)

**# Shafts:** 8

**Weaver's notes:** I like to choose a threading that can provide several patterns. Then I play...use one for the hem, another for the body, intersperse plain weave.





## Gail Ross MAFA Associate Member

**Structure:** Twill

**Source:** *Shadow Weave and Corkscrew*

Weave by Clotilde Barrett. Monograph #3 from *The Weaver's Journal*.

**Warp:** 8/2 cotton

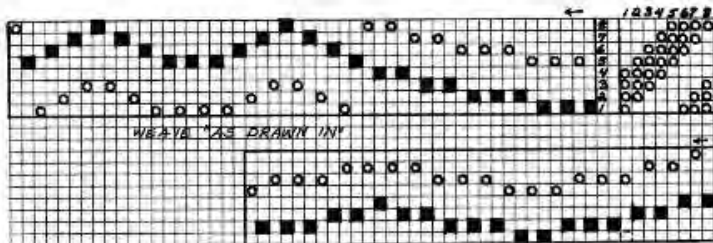
**Weft:** 8/2 cotton

**EPI:** 24

**# Ends:** 90 per repeat

**# Shafts:** 8

**Weaver's notes:** According to the monograph, shadow weave is basically a balanced weave but the patterns are derived from twill. The warp arrangement and weft picks alternate light and dark and the greater contrast, the greater visual impact.





# Ruth Thoem

## MAFA Associate Member

**Structure:** Twill

**Source:** Original design

**Warp:** 8/2 cotton

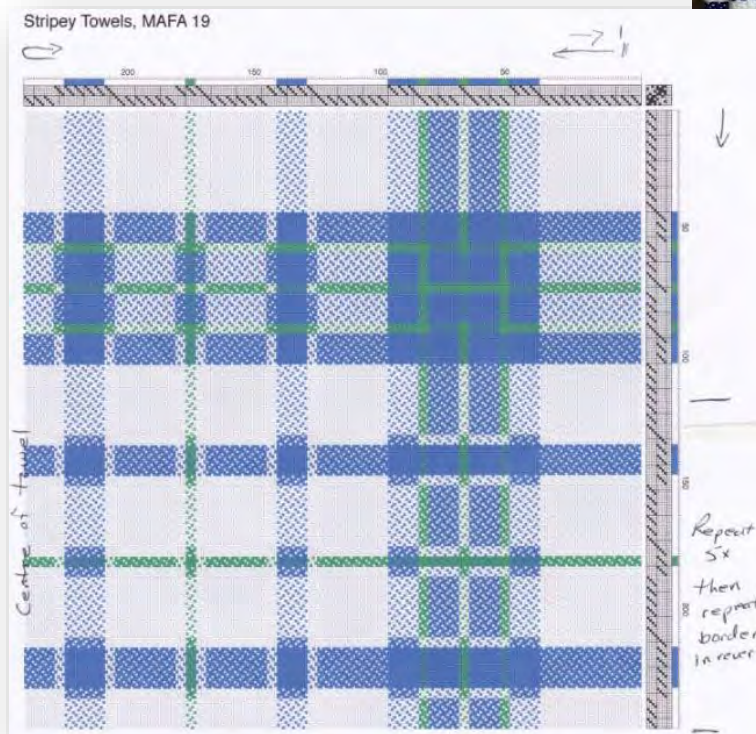
**Weft:** 8/2 cotton

**EPI:** 20

**# Ends:** 480

**# Shafts:** 8

**Weaver's notes:** This is based on a towel in *Handwoven*, but modified by me.





## Ellen Turner Handweavers of Bucks County

**Structure:** False Damask

**Source:** *The Weaver's Book of 8-Shaft Patterns* by Carol Strickler. #246

**Warp:** 8/2 cotton

**Weft:** 8/2 cotton

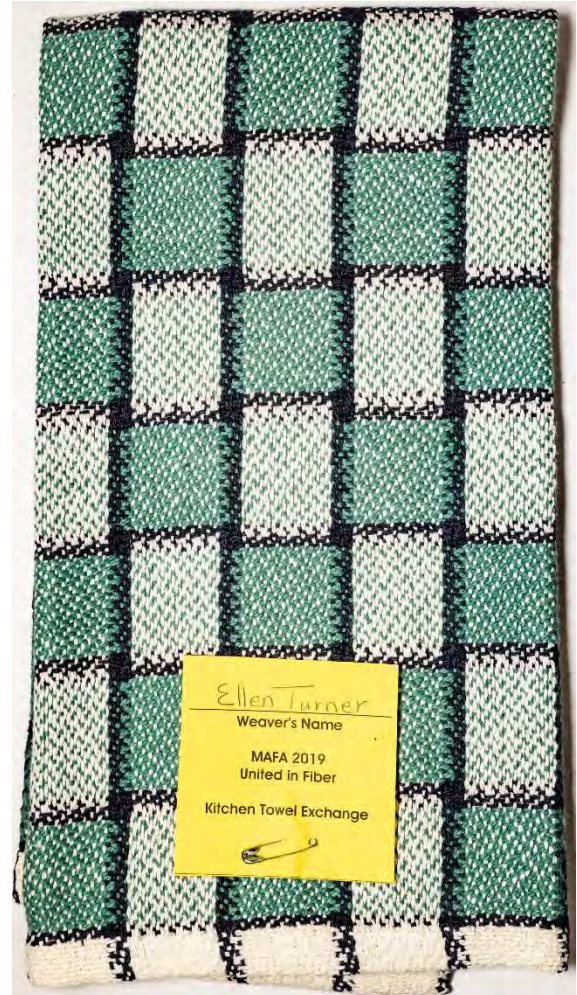
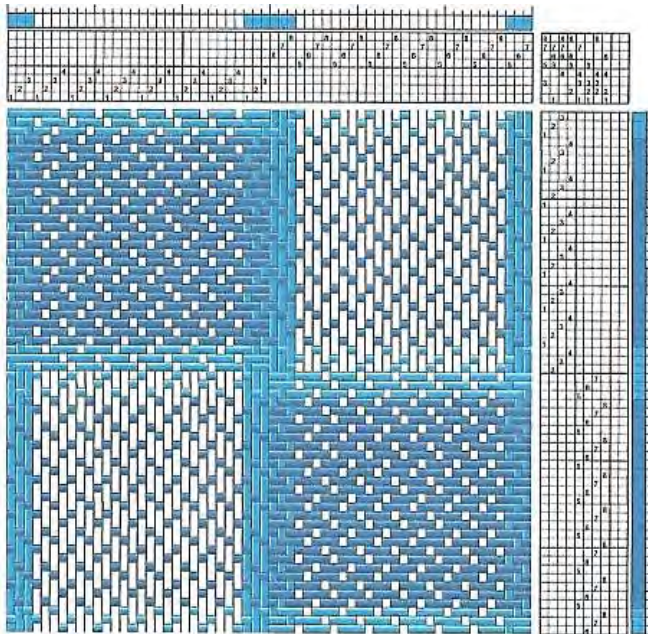
**EPI:** 20

**# Ends:** 390

**# Shafts:** 8

**Weaver's notes:** This has become one of my favorite towel warps. It is draft #246, false damask check. I call it woven ribbons, as that is what it looks like to me. Although it uses two shuttles, it is actually a very rhythmic weave.

On my ten-yard warp, I was able to get 11 towels.





**M. Lynn Yu**  
**Handweavers of Bucks County**

**Structure:** Twill

**Source:** Padre Wayne's "Undulating Twill #5" on [Ravelry](https://www.ravelry.com/patterns/library/undulating-twill-5). (Handweaving.net 61537)

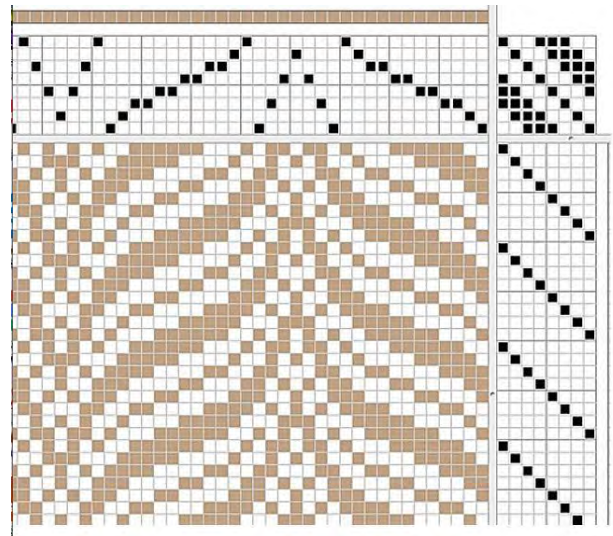
**Warp:** 8/2 cotton

**Weft:** 8/2 cotton

**EPI:** 24

**# Ends:** 494

**# Shafts:** 8





## Marjie Thompson

### MAFA Associate Member

**Structure:** 3 Shaft Spot, Basket Weave, 9 Shaft  
Hin und Wieder, Plain Weave  
**Source:** Original Design

**Warp:** 10/2 and 3/2 cotton

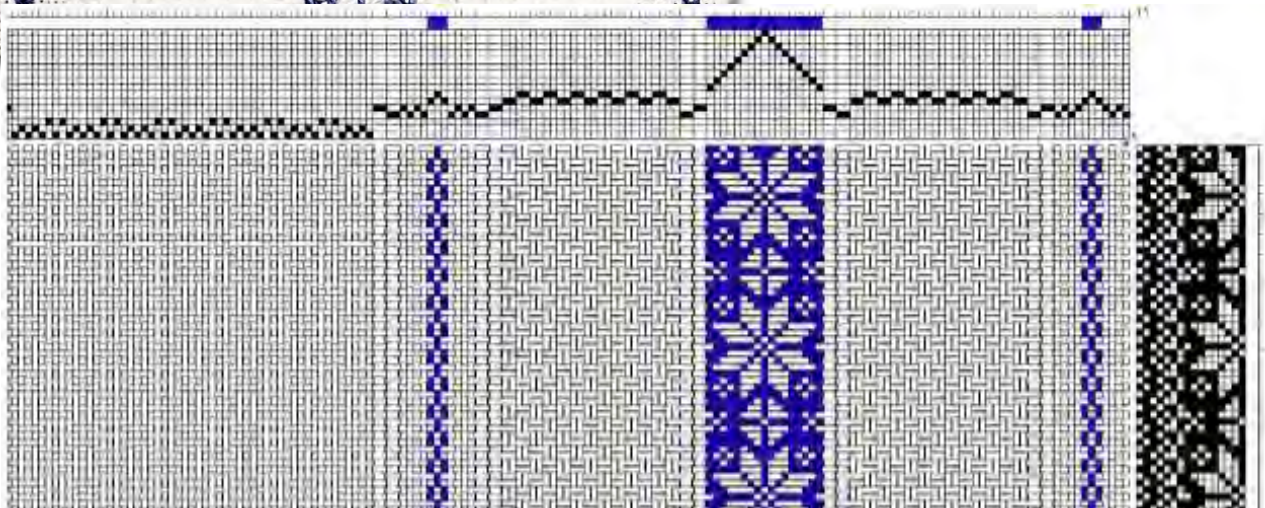
**Weft:** 10/2 cotton (unmercerized)

**EPI:** 23 or so (10/2 two per dent, 3/2 one per dent)

**# Ends:** whatever needed to balance and for width

**# Shafts:** 15

**Weaver's notes:** This was my 2019 Cross Country Weavers sample. The assignment was "Stripes in Structure."





**Nancy Everham**  
**Harmony Weavers Guild,**  
**South Jersey Guild of Spinners & Handweavers**

**Structure:** Twill

**Source:** *16 Harness Patterns – The Fanciest Twills of All* by Irene Wood. [handweaving.net](http://handweaving.net).  
Draft #34796

**Warp:** 8/2 cotton

**Weft:** 8/2 cotton

**EPI:** 24

**# Ends:** 432

**# Shafts:** 16

**Weaver's notes:** Used 5 stripes of my hand dyed 8/2 cotton (purple/blue, orange/pink, yellow, greens, red/orange) – each 3" wide with ½" wide stripes of purple, teal and blue of commercially dyed 8/2 cotton. The hems are plain weave (1½" long, turned and machine stitched).

Crocheted a hanging loop from Red Heart Scrubby Smoothy cotton from JoAnn Fabrics. Chose a turned twill to best show off the hand dyed cottons. Originally tried to use a boucle cotton; but it completely obliterated the pattern – so I found the size 8 white cotton in my stash (Phildar 316 Relais no 8, made in France, purchased in an estate sale), which is actually a 4 ply but seems to be the same weight as 8/2 cotton. I think the pattern and the stripes are a beautiful complement to each other.

